

Chapter 11

AN ACT RESPECTING THE CONSTITUENCIES OF NUNAVUT

(Assented to May 31, 2024)

The Commissioner, by and with the advice and consent of the Legislative Assembly, enacts as follows:

1. This Act amends the *Nunavut Elections Act*.

2. Subsection 31(2) is repealed and replaced by:

Authoritative descriptions of constituencies

(2) The authoritative descriptions of the areas and boundaries of the constituencies are contained in the electronic copy entitled *Official Digital Version of Nunavut's Constituencies Maps 2024*, prepared by the Chief Electoral Officer.

3. Part 2 of the Schedule is repealed and replaced by Part 2 in the Schedule to this Act.

4. This Act comes into force on the 1st day following the day the Sixth Legislative Assembly dissolves, but no earlier than six months after the day this Act receives Assent.

SCHEDULE

(section 3)

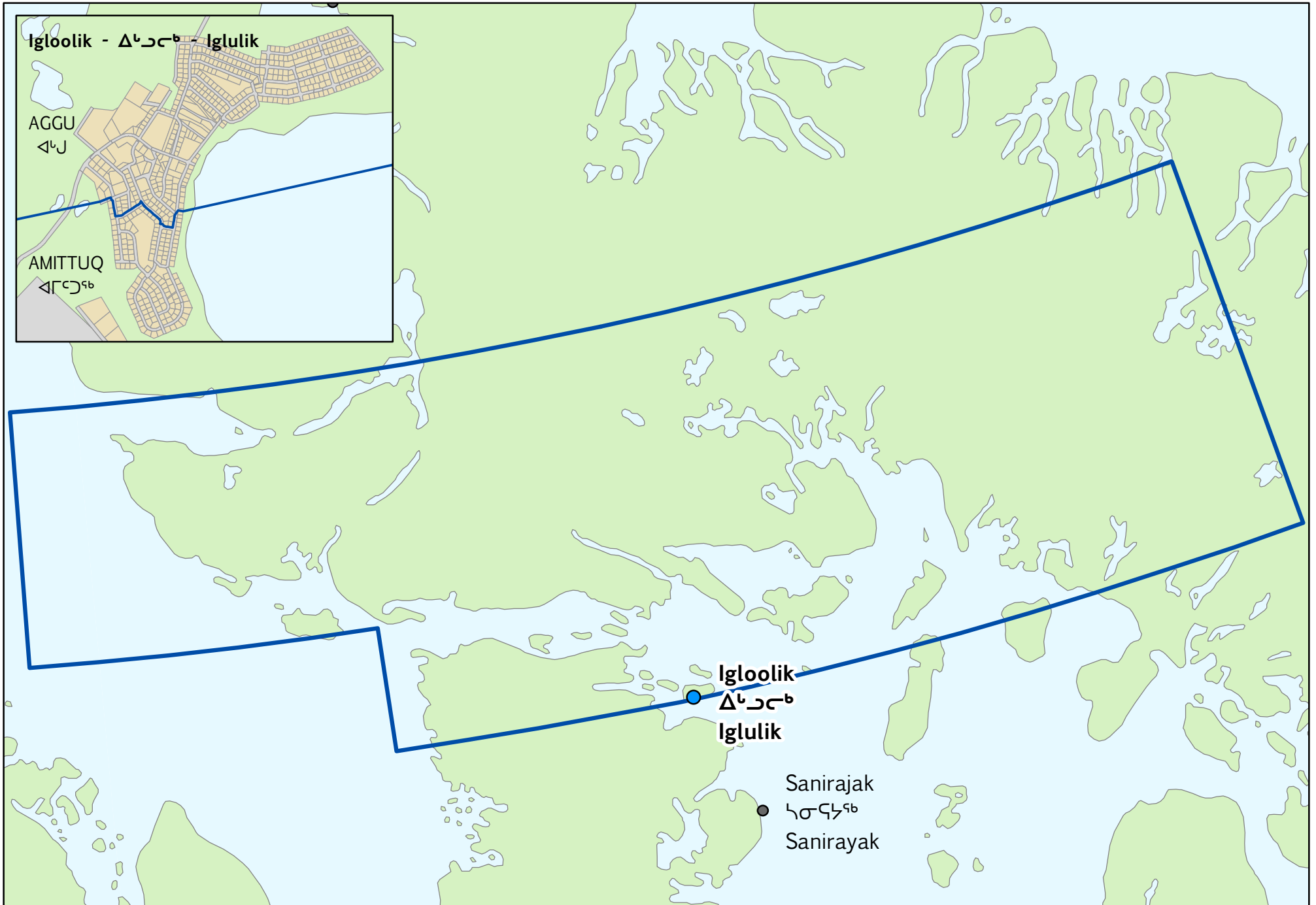
Part 2

Maps For Convenience of Reference

Please refer to the end of this document where the Maps of Nunavut and of the 22 Constituencies have been appended together.

This is an official copy published by the authority of the Territorial Printer
©2024 GOVERNMENT OF NUNAVUT

AGGU - ᐱᑭᑦ



Iglulik - ᐱᑭᑦ - Iglulik

AGGU
ᐱᑭᑦ

AMITTUQ
ᐱᑭᑦᐱᑦ

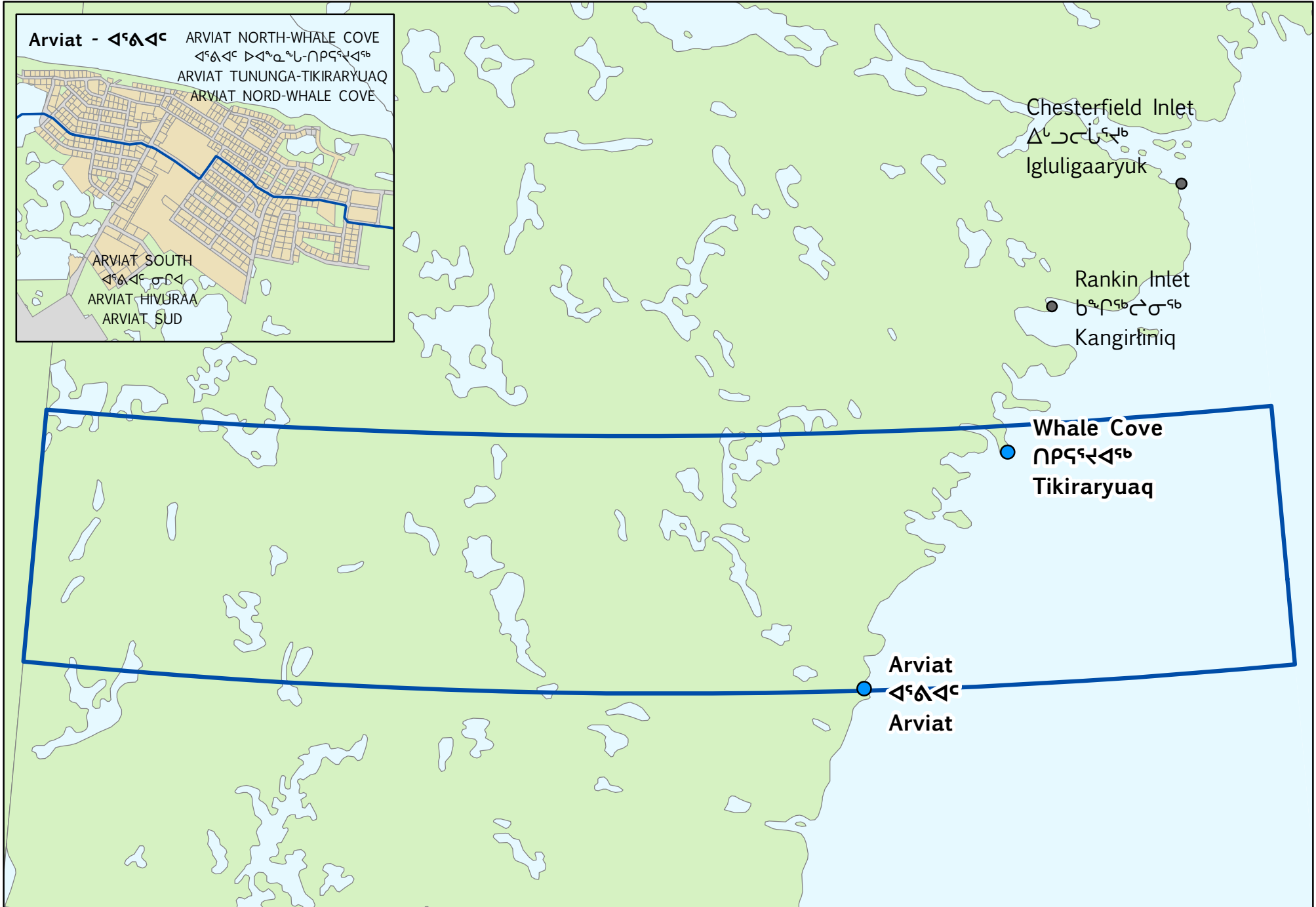
Iglulik
ᐱᑭᑦ
Iglulik

Sanirajak
ᑭᑭᑭᑭᑭᑭ
Sanirajak

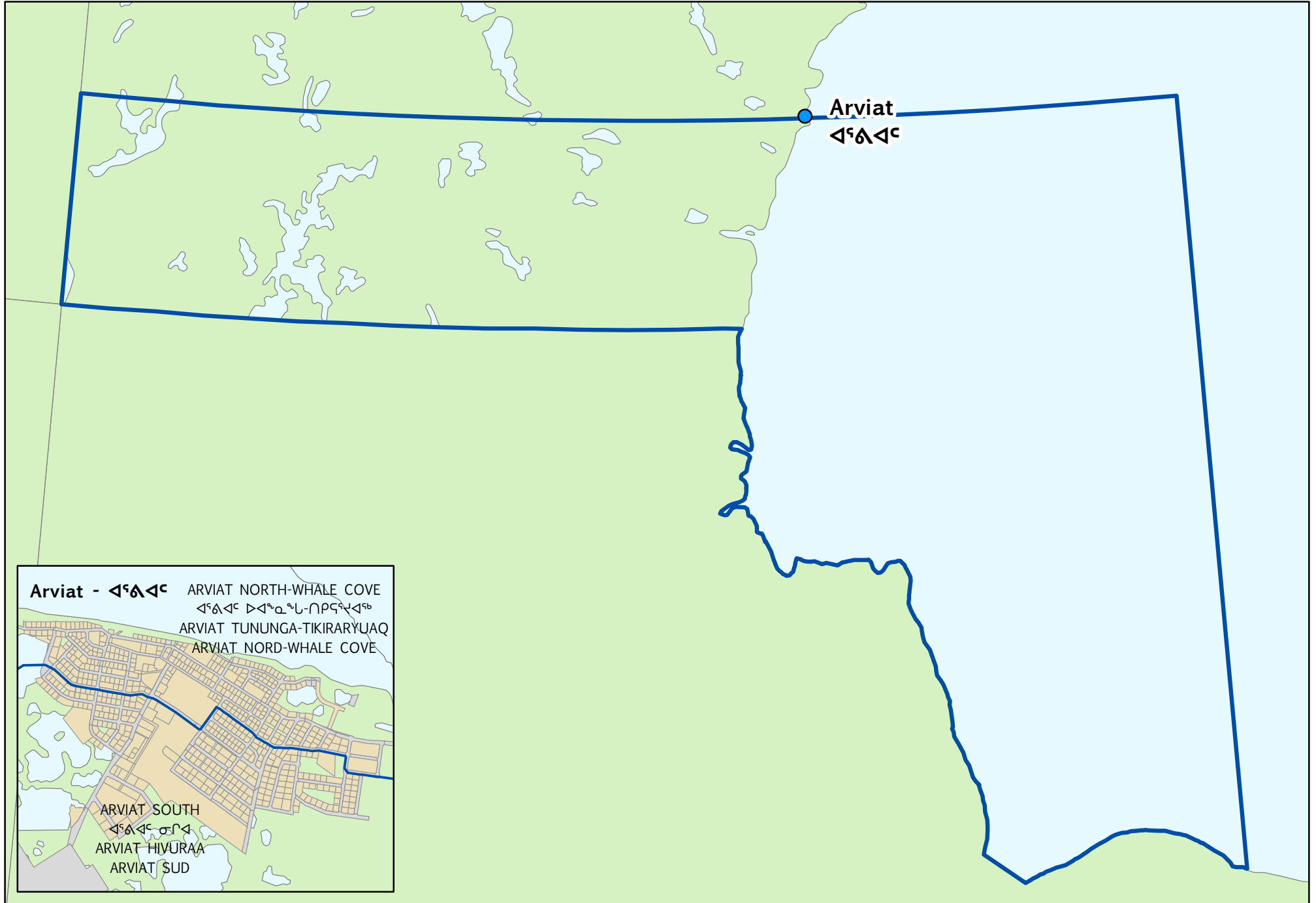
AMITTUQ - ᐱᐢᐸᐸᐸᐸ



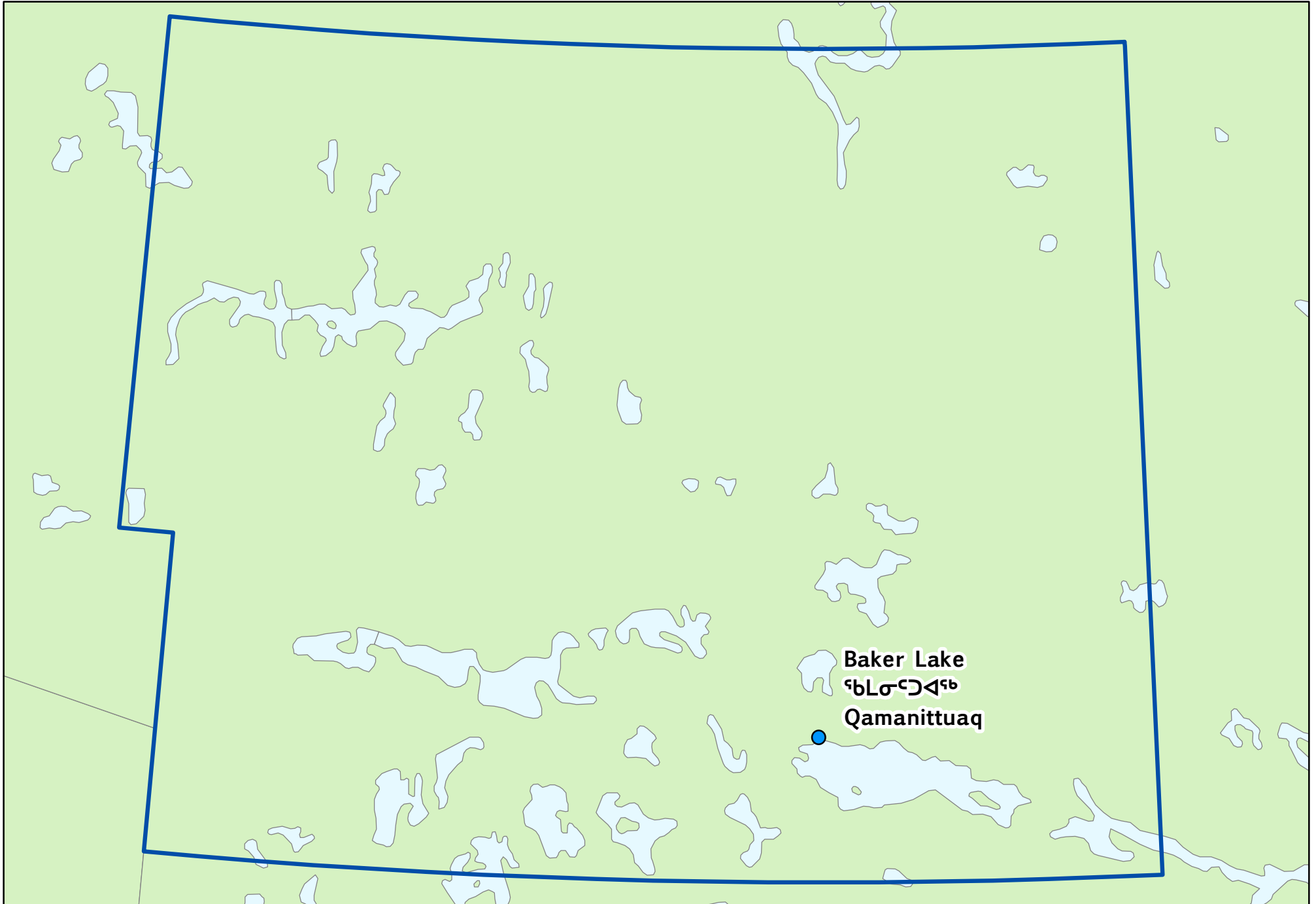
ARVIAT NORTH-WHALE COVE - ᐱᖃᐱᖃ ᐅᐱᖅᓂᖅ-ᓂᐱᖃᖃᐱᖅ - ARVIAT TUNUNGA-TIKIRARYUAQ - ARVIAT NORD-WHALE COVE



ARVIAT SOUTH - ᐱᕐᕐᕐᕐ ᓂᓯᐱ - ARVIAT HIVURAA - ARVIAT SUD



BAKER LAKE - ᓆᓇᓇᓇᓇᓇᓇ - QAMANITTUAQ



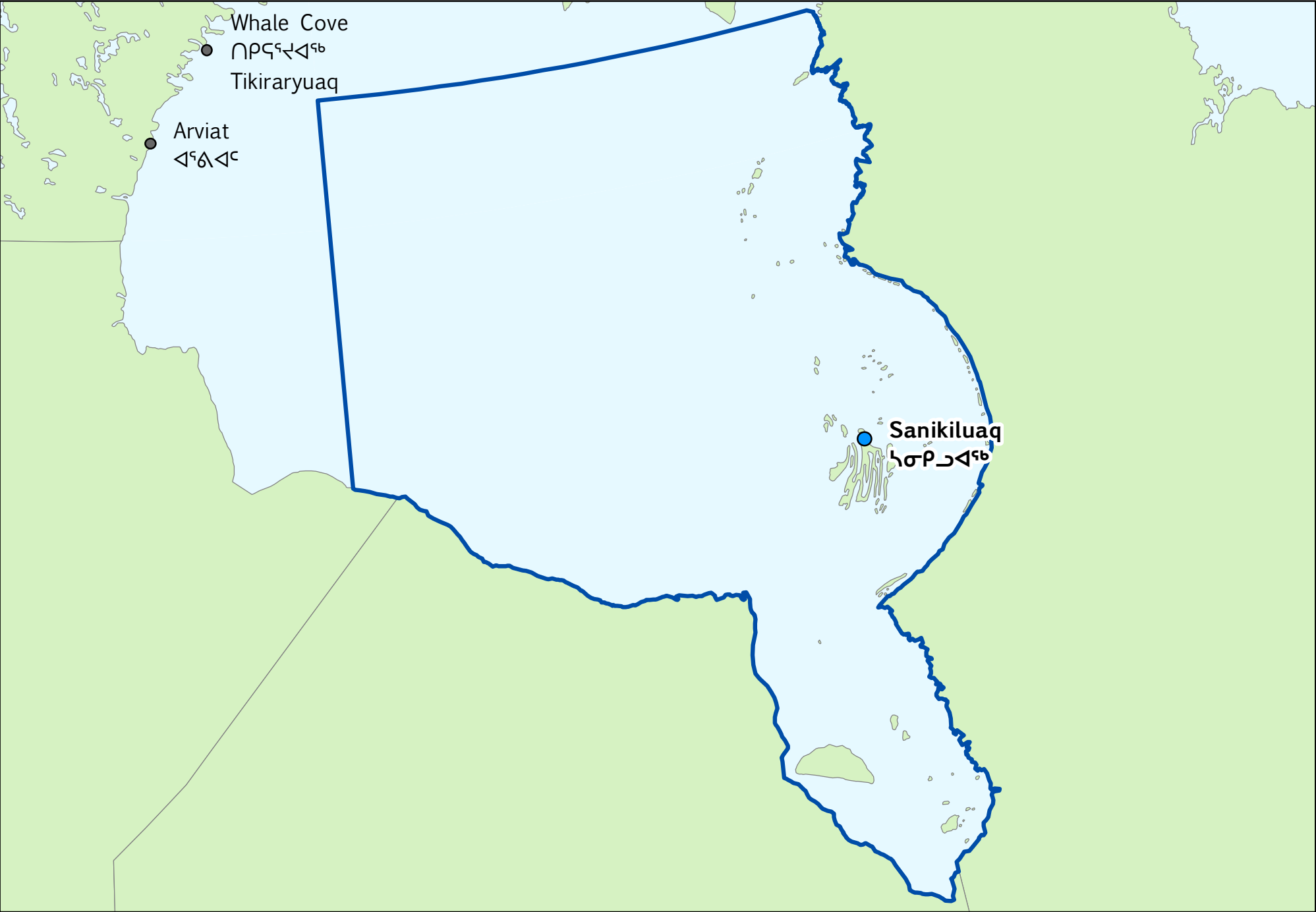
CAMBRIDGE BAY - ᐃᖃᓗᓐᓕᓐᓂᐱᖃ - IQALUKTUUTTIAQ



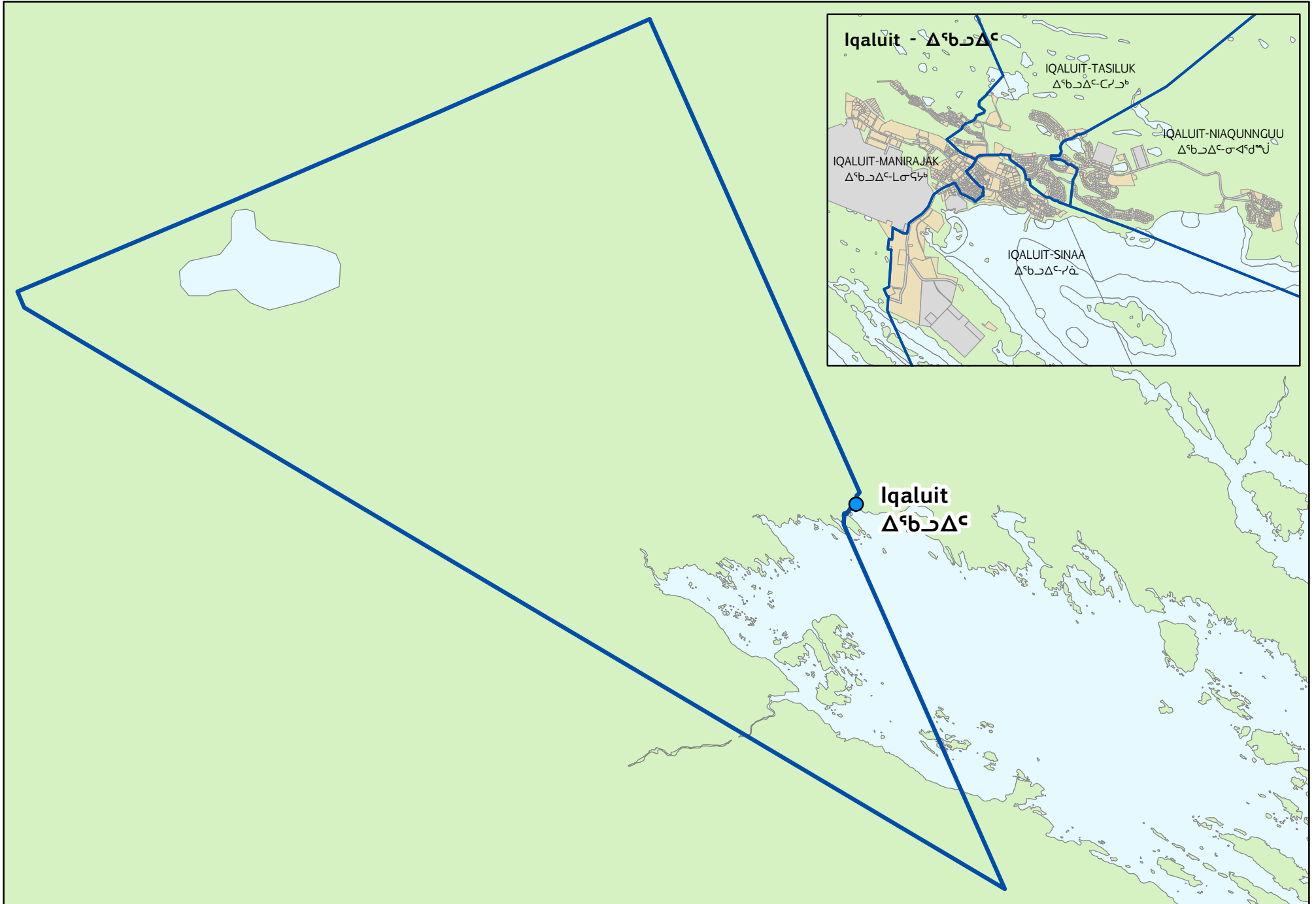
GJOA HAVEN - ᐅᓃᓃᓃᓃᓃᓃᓃ - UQHUTUUQ



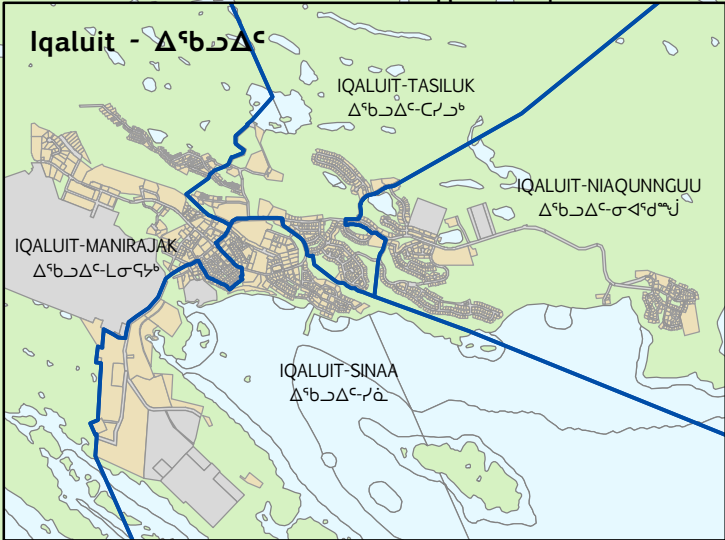
HUDSON BAY - ᑕᕈᕈᕐᕐᕐᕐᕐᕐᕐ - TAHUUYARYUAQ - BAIE D'HUDSON



IQUALUIT-MANIRAJAK - ᐃᑭᐅᐃᑦ-ᐅᐃᑭᐅᑦ



IQUALUIT-NIAQUUNGUU - ᐃᑭᐃᐅᑦ-ᑭᐅᐅᐅᑦ

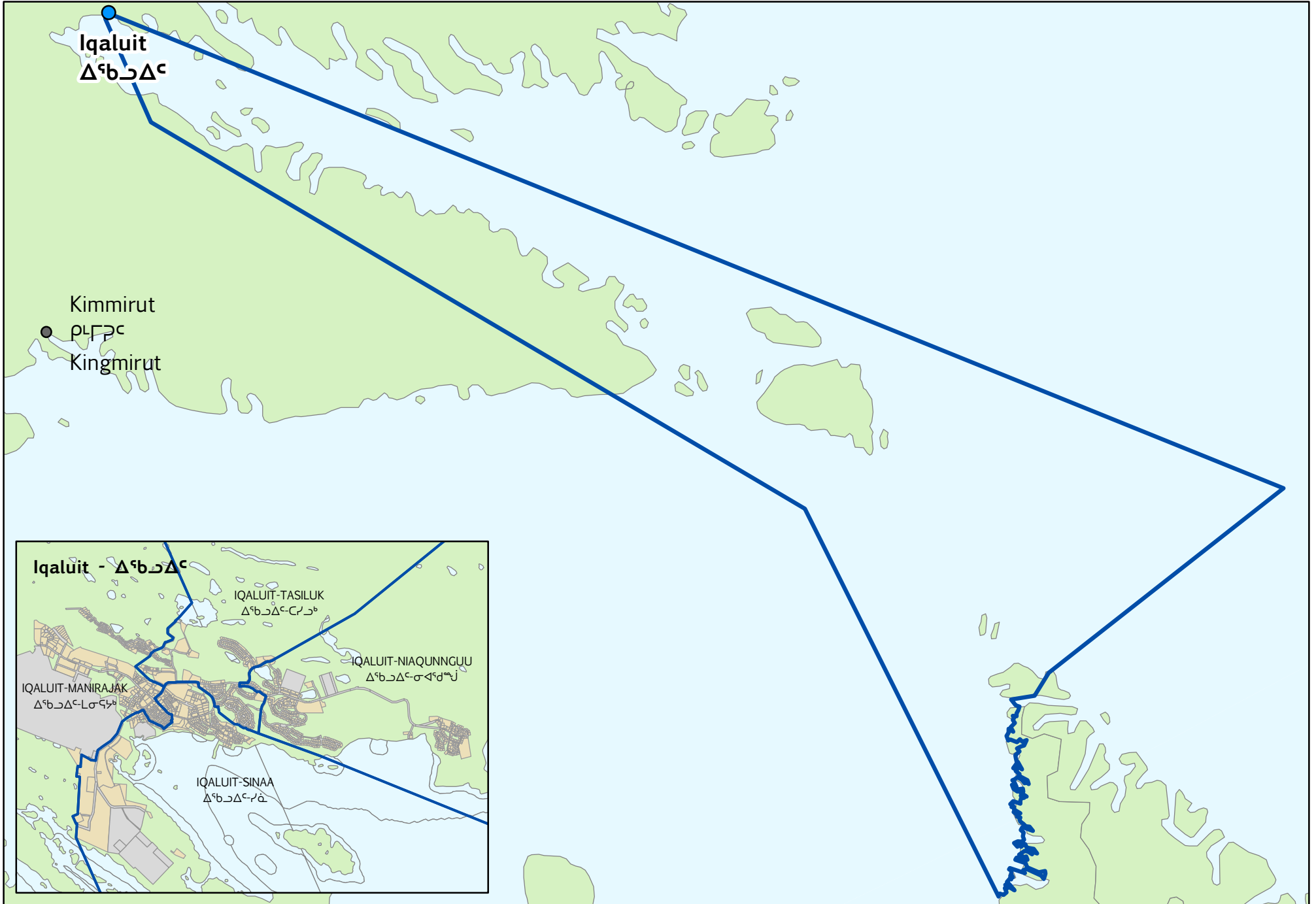


Iqaluit
ᐃᑭᐃᐅᑦ

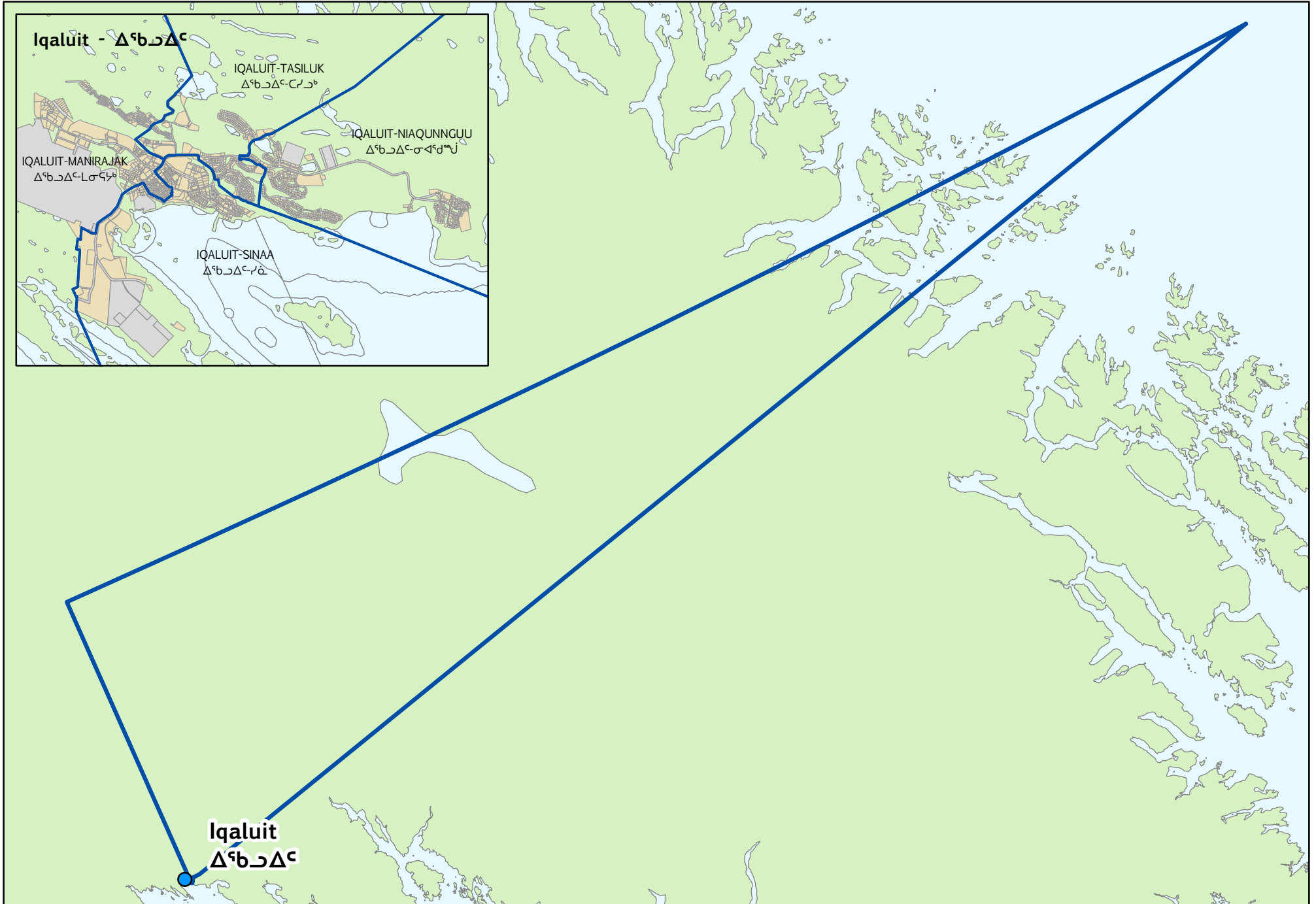
● Kimmirut
ᓴᓴᓴᓴᓴᓴ
Kingmirut



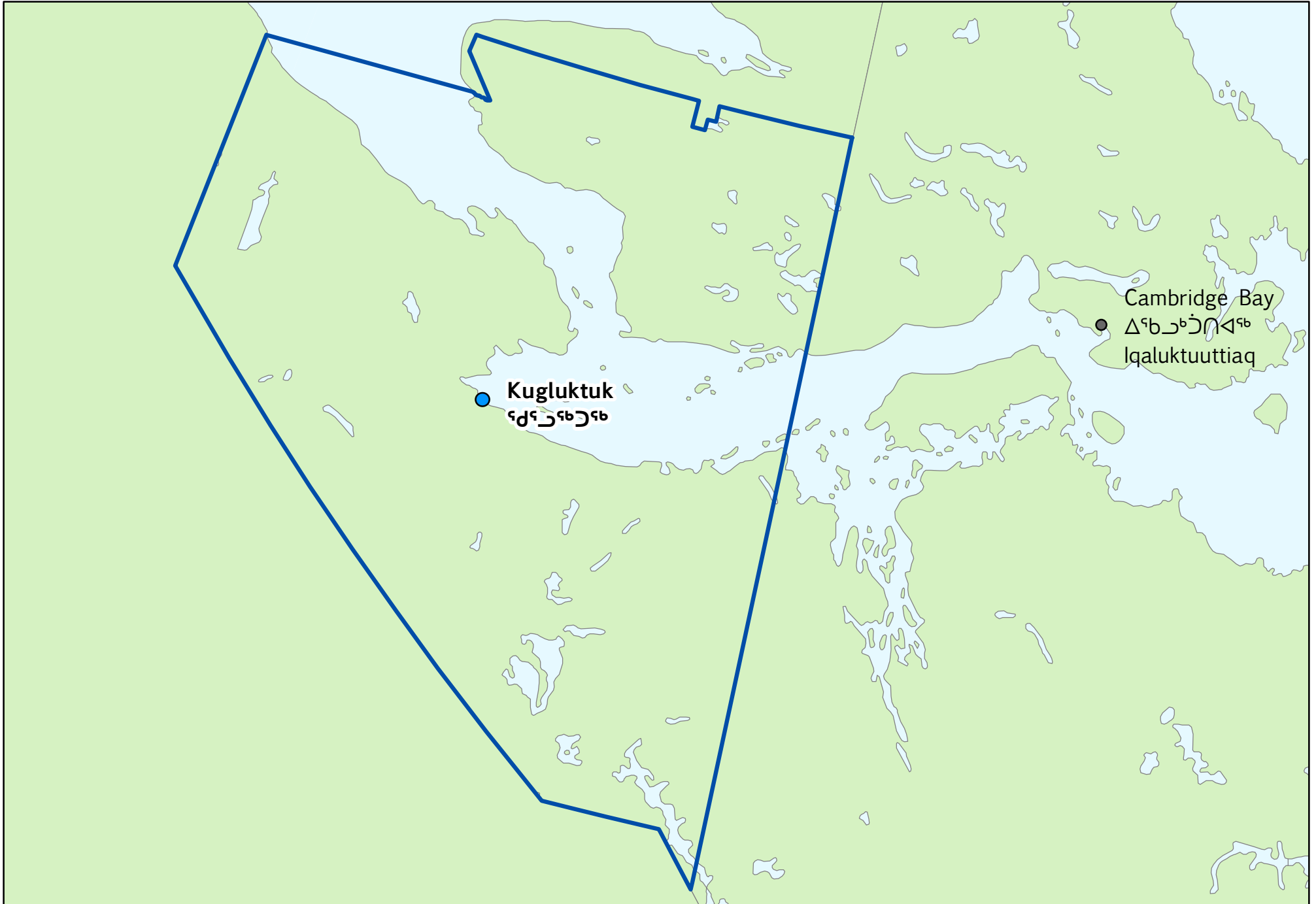
IQUALUIT-SINAA - ᐃᑦᑲᐃᑦ-ᓱᐃ



IQALUIT-TASILUK - ᐃᑲᐃᐅᐅᐅᐅᐅᐅ



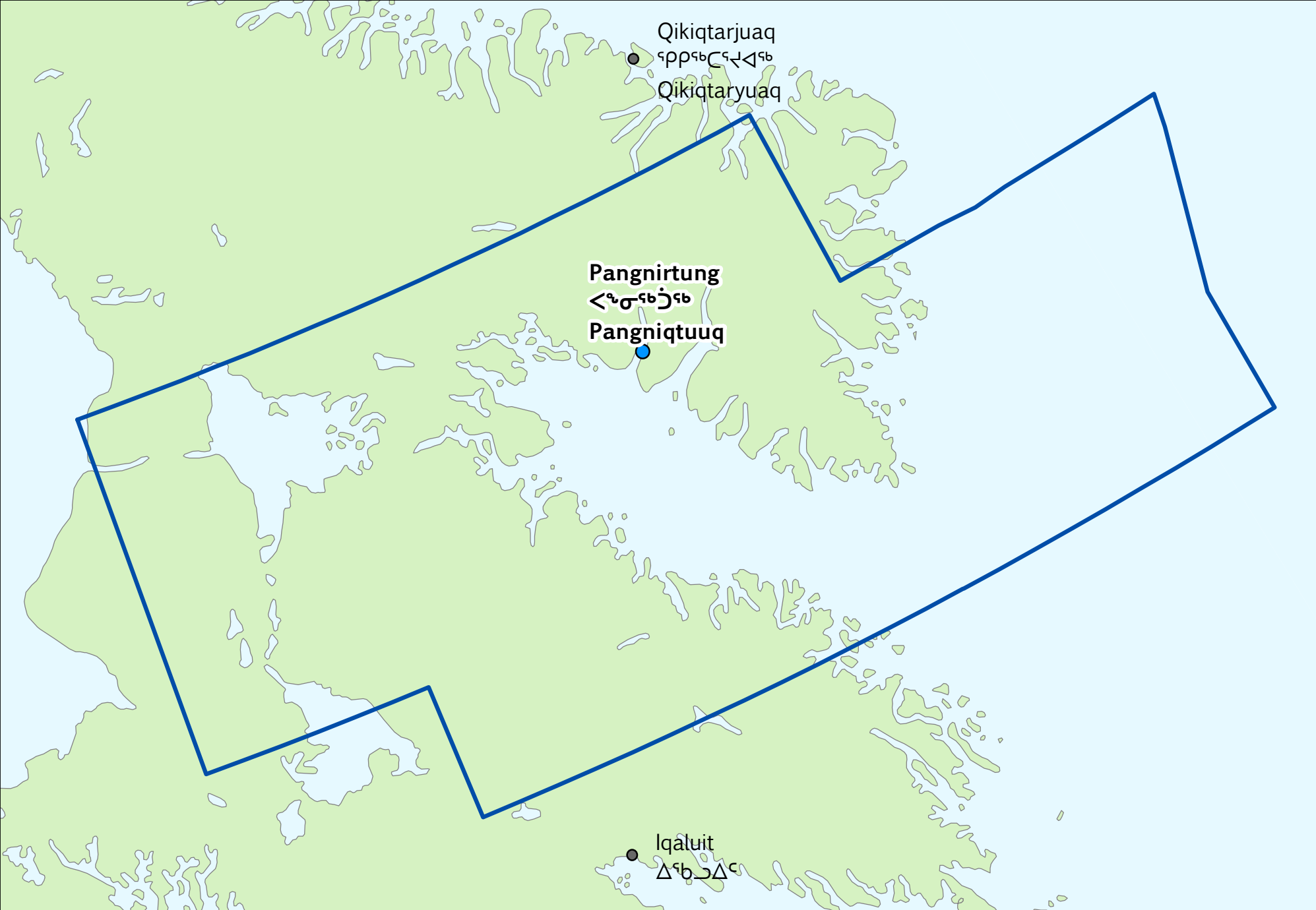
KUGLUKTUK - ᑭᑭᑭᑭᑭᑭ



NETSILIK - ᓇᓂᓂᓂ



PANGNIRTUNG - ᐱᐃᑎᑦᕐᔪᑦᕆᑦᑦᕐ - PANGNIQTUUQ



Qikiqtarjuaq

ᑲᑲᑲᑲᑲᑲᑲᑲᑲ

Qikiqtaryuaq

Pangnirtung

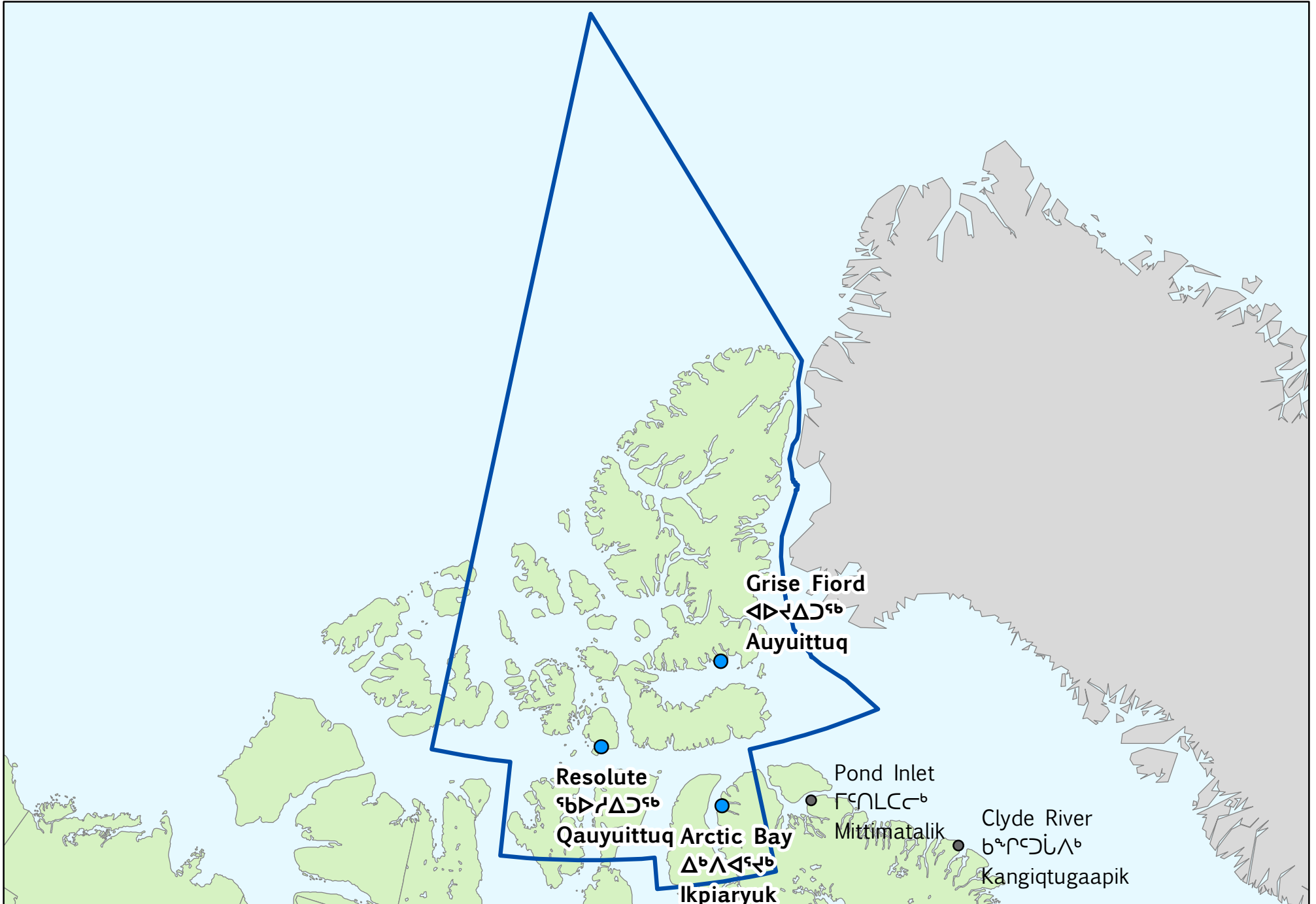
ᐱᐃᑎᑦᕐᔪᑦᕆᑦᑦᕐ

Pangniqtuuq

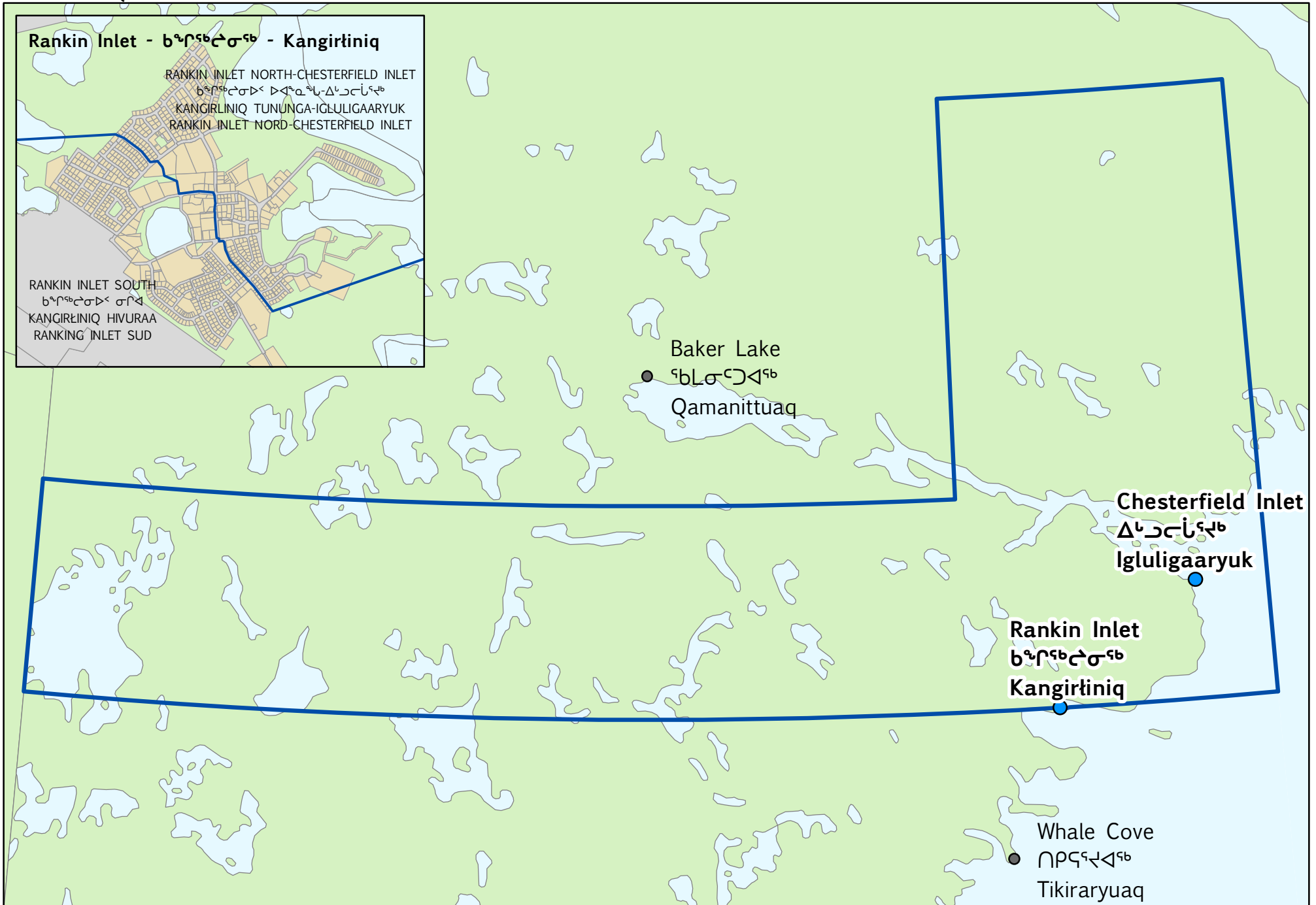
Iqaluit

ᐱᑲᑲᑲᑲᑲ

QUTTIKTUQ - ᑭᑭᑭᑭᑭᑭ



RANKIN INLET NORTH-CHESTERFIELD INLET - Rankin Inlet North-Chesterfield Inlet
KANGIRLINIQ TUNUNGA-IGLULIGAARYUK - Rankin Inlet North-Chesterfield Inlet



RANKIN INLET SOUTH - ᑲᓐᓂᑦᑲᑦᑲᑦᑲᑦ ᑭᓂᑦᑲᑦ - KANGIRĹINIQ HIVURAA - RANKIN INLET SUD



Rankin Inlet - ᑲᓐᓂᑦᑲᑦᑲᑦᑲᑦ - KangirĹiniq

RANKIN INLET NORTH-CHESTERFIELD INLET
ᑲᓐᓂᑦᑲᑦᑲᑦᑲᑦ ᑲᓐᓂᑦᑲᑦᑲᑦᑲᑦ
KANGIRĹINIQ TUNUNGA-IGĹULIGAARYUK
RANKIN INLET NORD-CHESTERFIELD INLET

RANKIN INLET SOUTH
ᑲᓐᓂᑦᑲᑦᑲᑦᑲᑦ ᑭᓂᑦᑲᑦ
KANGIRĹINIQ HIVURAA
RANKIN INLET SUD

Baker Lake
ᑲᓂᑦᑲᑦᑲᑦᑲᑦ
Qamanittuaq

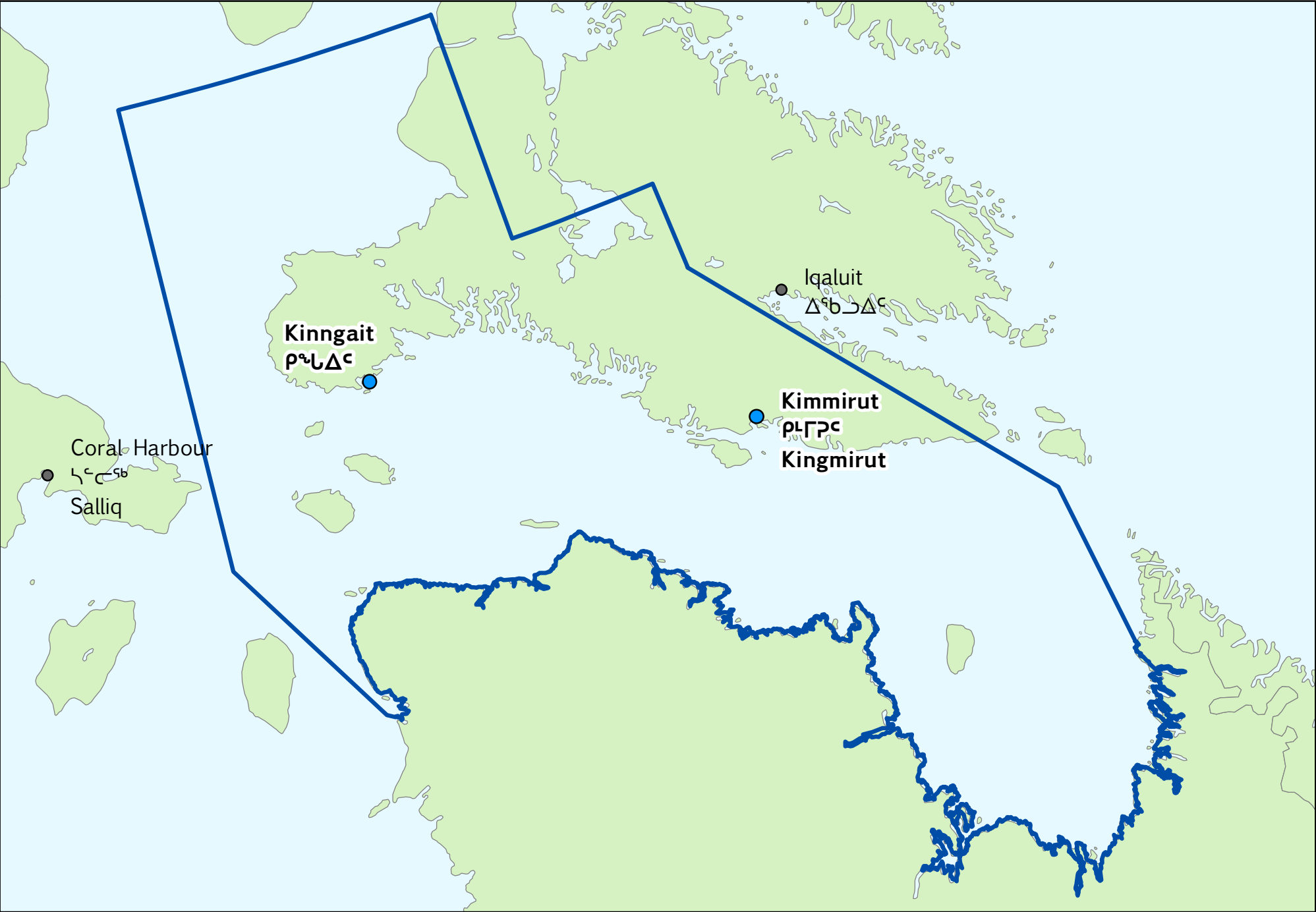
Chesterfield Inlet
ᑲᓂᑦᑲᑦᑲᑦᑲᑦ
Igluligaaryuk

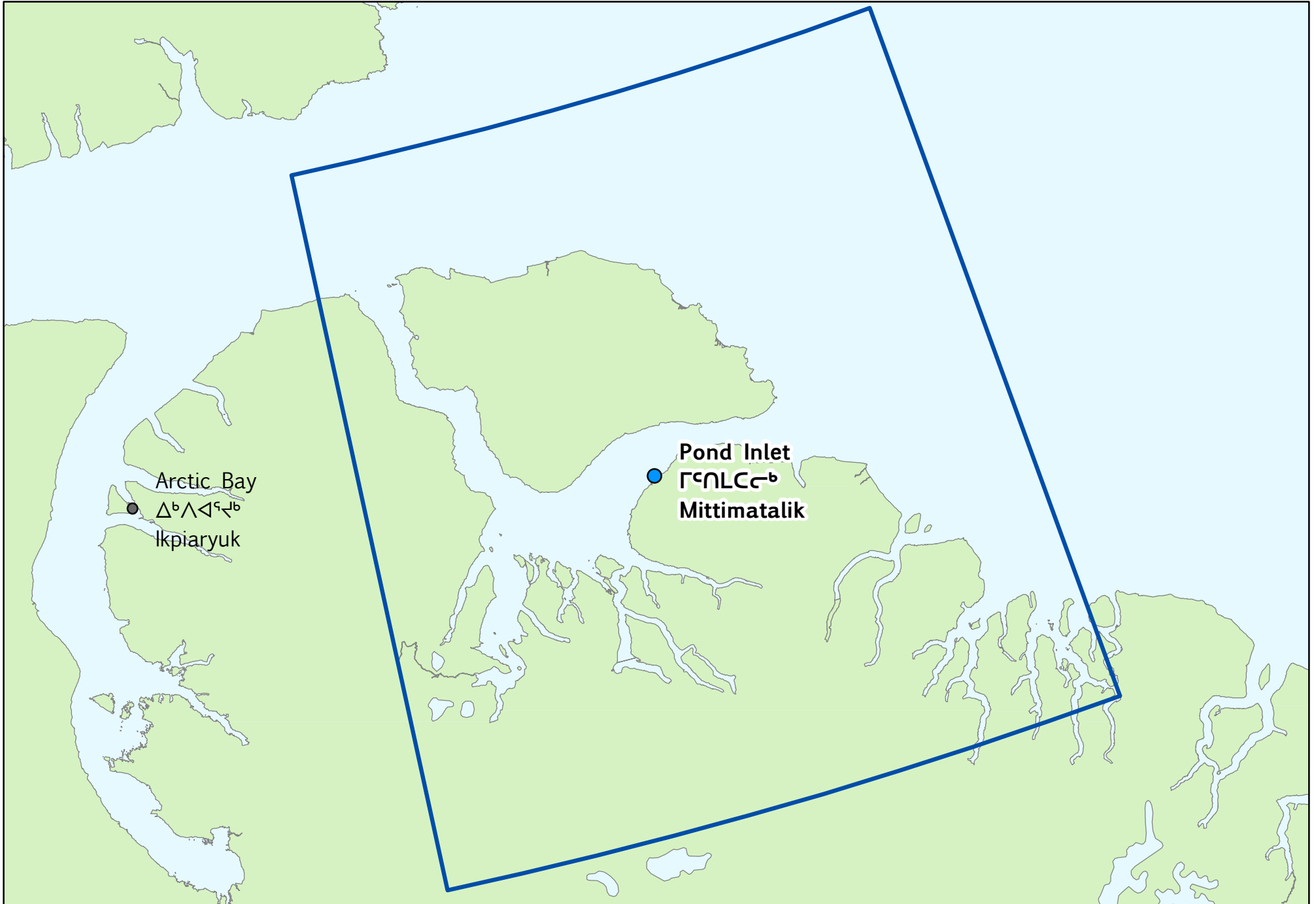
Rankin Inlet
ᑲᓐᓂᑦᑲᑦᑲᑦᑲᑦ
KangirĹiniq

Whale Cove
ᑲᓐᓂᑦᑲᑦᑲᑦᑲᑦ
Tikiraryuaq

Arviat
ᑲᓐᓂᑦᑲᑦᑲᑦᑲᑦ

SOUTH BAFFIN - ᓄᐃᑦᓴᑦ ᓂᐃᑦ - HIVURAA QIKIQTAAALUK - BAFFIN SUD





UQQUMMIUT - ᐅᑦᐃᑦᐅᑦ - UQQURMIUT

