

Chapter 24

AN ACT RESPECTING THE CONSTITUENCIES OF NUNAVUT

(Assented to October 31, 2011)

The Commissioner of Nunavut, by and with the advice and consent of the Legislative Assembly, enacts as follows:

Legislative Assembly and Executive Council Act

1. (1) The *Legislative Assembly and Executive Council Act* is amended by this section.

(2) Section 3 is repealed and the following substituted:

Composition of Legislative Assembly

3. The Legislative Assembly consists of 22 members, each elected to represent one constituency in accordance with the *Nunavut Elections Act*.

(3) Schedule A is repealed.

Nunavut Elections Act

2. (1) The *Nunavut Elections Act* is amended by this section.

(2) Subsection 2(1) is amended by repealing the definition "constituency" and substituting the following:

"constituency" means a geographic area, described in accordance with section 31, that is represented by a member of the Legislative Assembly; (*circonscription*)

(3) Section 31 is repealed and the following substituted:

Constituencies

Constituencies

31. (1) Nunavut is divided into 22 constituencies with the names set out in Part 1 of the Schedule. Each language version of those names is equally authoritative.

Authoritative descriptions of constituencies

(2) The authoritative descriptions of the areas and boundaries of the constituencies are contained in the DVD entitled *Official Digital Version of Nunavut's Constituencies Maps 2011*, prepared by the Chief Electoral Officer in accordance with subsection 20(4) and the *Report of the 2011 Nunavut Electoral Boundaries Commission* dated June 7, 2011 and the Addendum to that report dated August 8, 2011.

Maps for convenience

(3) For the purpose of convenience only, maps of the constituencies are included in Part 2 of the Schedule.

Availability

(4) The Chief Electoral Officer shall ensure that copies of the DVD referred to in subsection (2) and the maps in Part 2 of the Schedule are available to the public without charge.

(4) The schedule set out in the schedule to this Act is added to the Act.

Coming Into Force

3 This Act comes into force on the 1st day following the day the Third Legislative Assembly dissolves, but no earlier than six months after the day this Act receives assent.

SCHEDULE

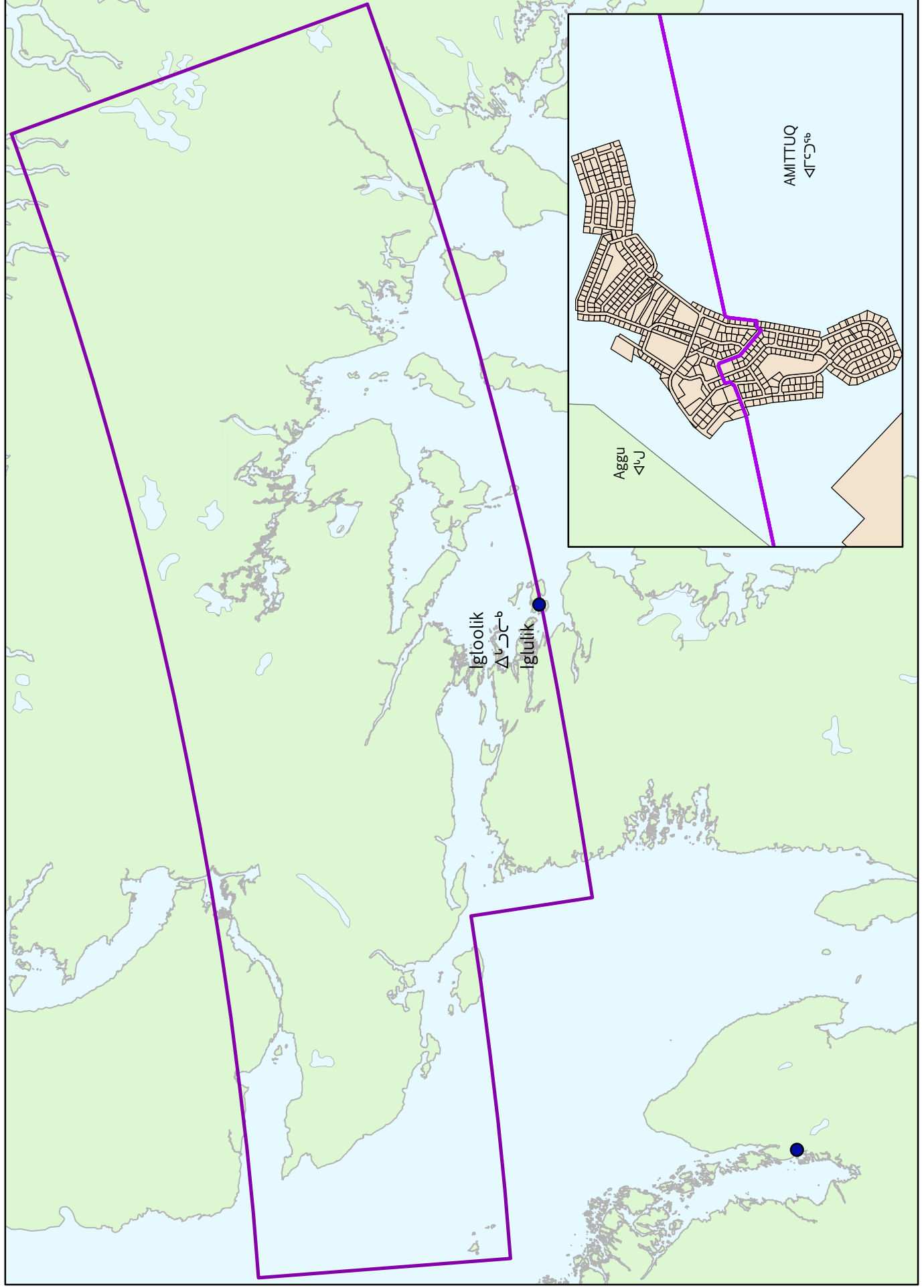
(Subsection 2(4))

SCHEDULE

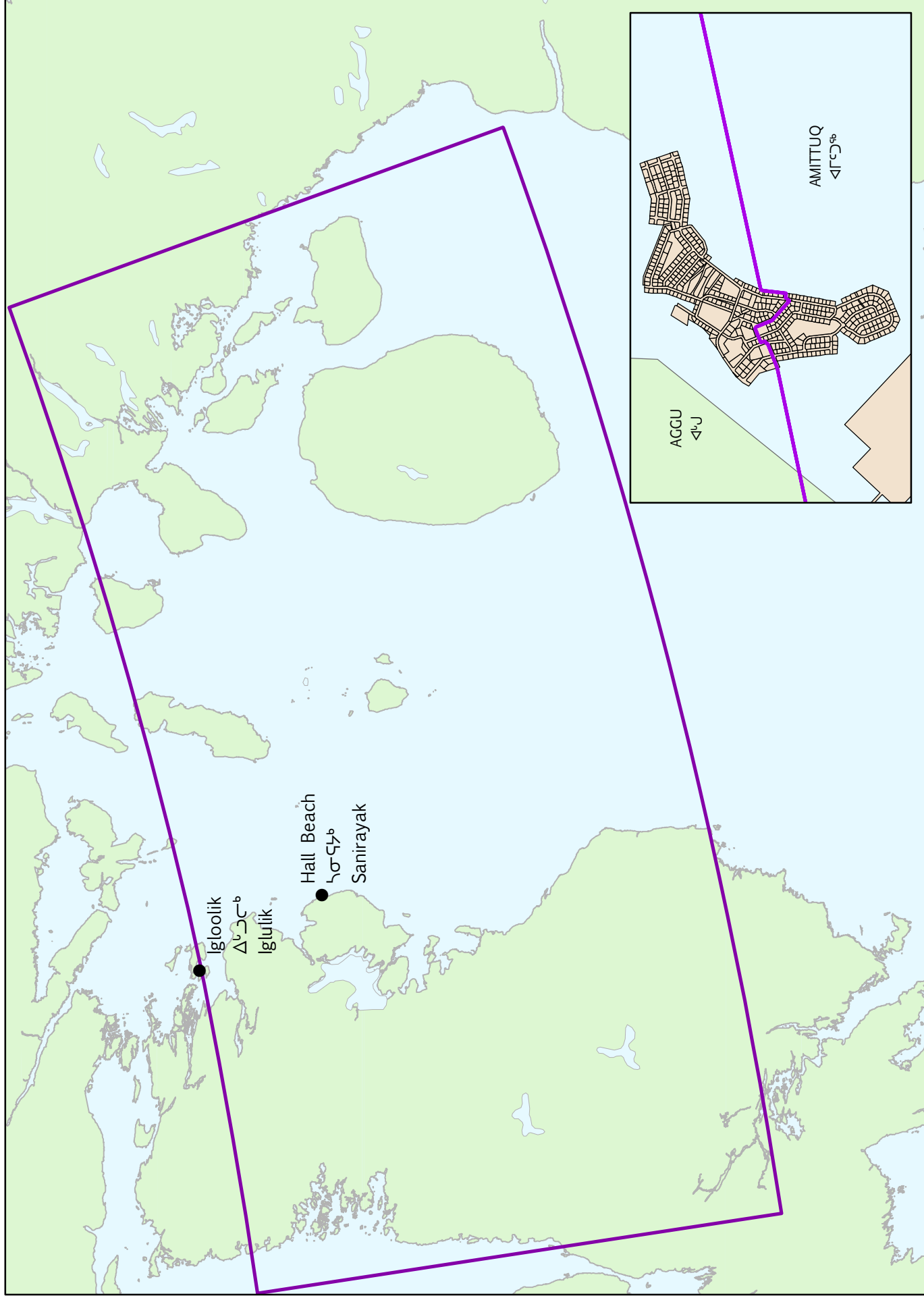
(Section 31)

Part 1
Names of Constituencies

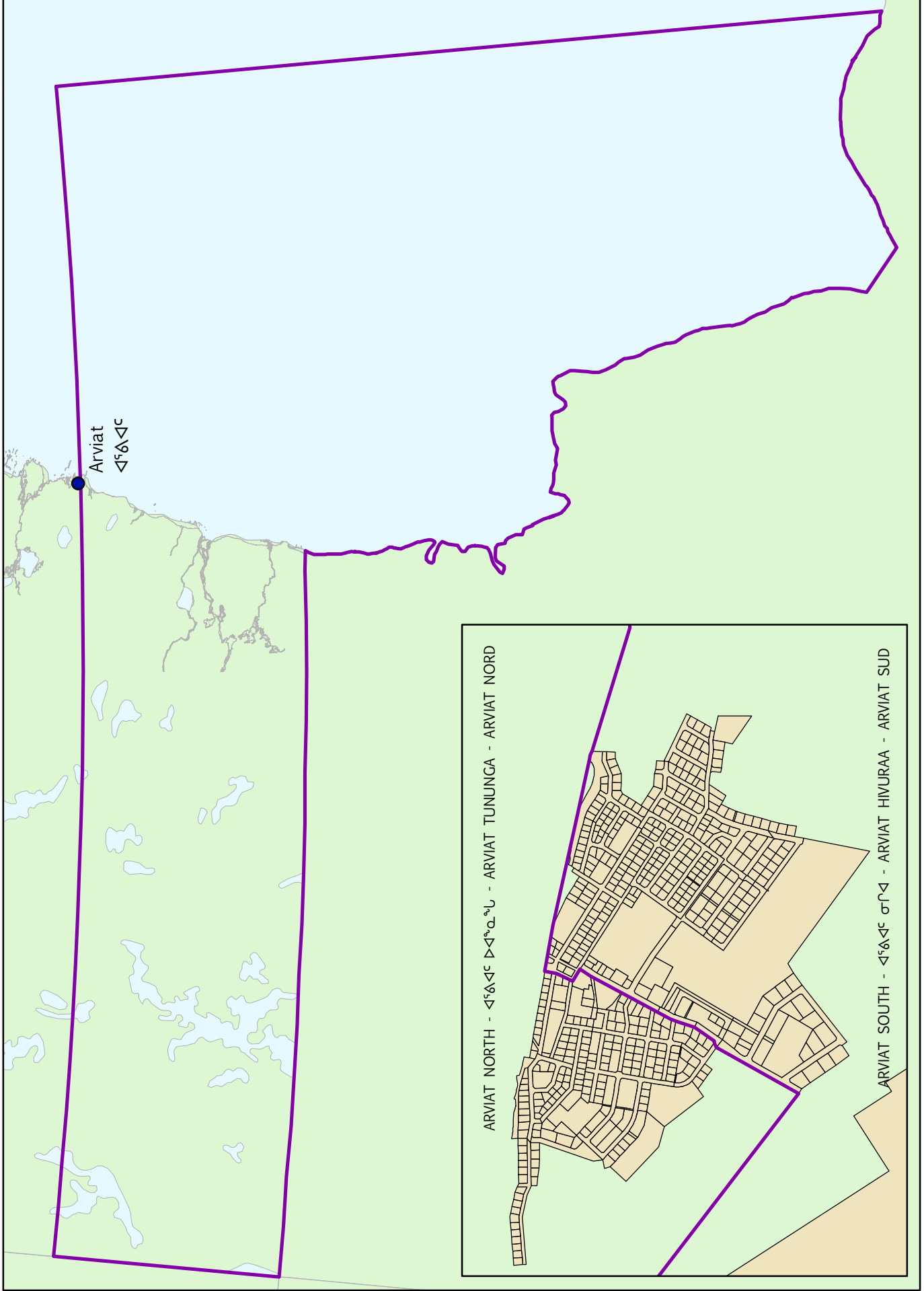
English	ᐃᑭᑦᑕᑦ	Français	Inuinnaqtun
Aggu	ᐱᑭᑦ	Aggu	Aggu
Aivilik	ᐱᑭᑦᑕᑦ	Aivilik	Aivilik
Amittuq	ᐱᑭᑦᑕᑦ	Amittuq	Amittuq
Arviat North	ᐱᑭᑦᑕᑦ ᐃᑭᑦᑕᑦ	Arviat Nord	Arviat Tununga
Arviat South	ᐱᑭᑦᑕᑦ ᑭᑦᑕ	Arviat Sud	Arviat Hivuraa
Baker Lake	ᑕᐱᑦᑕᑦ ᑕᐱᑦᑕᑦ	Baker Lake	Qamanittuq
Cambridge Bay	ᐱᑭᑦᑕᑦ ᐃᑭᑦᑕᑦ	Cambridge Bay	Iqaluktuuttiaq
Gjoa Haven	ᑕᑭᑦᑕᑦ	Gjoa Haven	Uqhuqtuq
Hudson Bay	ᑕᑭᑦᑕᑦ ᑕᑭᑦᑕᑦ	Baie d'Hudson	Tahiuyaryuaq
Kugluktuk	ᑕᑭᑦᑕᑦ	Kugluktuk	Kugluktuk
Manirajaaq	ᑕᑭᑦᑕᑦ	Man iraj aaq	Manirajaaq
Netchelik	ᑕᑭᑦᑕᑦ	Netchelik	Netchelik
Niaqunnguuti	ᑕᑭᑦᑕᑦ	Niaqunnguuti	Niaqunnguuti
Pangnirtung	ᑕᑭᑦᑕᑦ	Pangnirtung	Pangniqtuuq
Quttiktuq	ᑕᑭᑦᑕᑦ	Quttiktuq	Quttiktuq
Rankin Inlet North	ᑕᑭᑦᑕᑦ ᑕᑭᑦᑕᑦ	Rankin Inlet Nord	Kangirliniq Tununga
Rankin Inlet South	ᑕᑭᑦᑕᑦ ᑕᑭᑦᑕᑦ ᑕᑭᑦᑕᑦ	Rankin Inlet Sud	Kangirliniq Hivuraa
Sinaa	ᑕᑭᑦᑕᑦ	Sinaa	Sinaa
South Baffin	ᑕᑭᑦᑕᑦ ᑕᑭᑦᑕᑦ	Baffin Sud	Hivuraa Qikiqtaaluk
Tasirluq	ᑕᑭᑦᑕᑦ	Tasirluq	Tasirluq
Tununiq	ᑕᑭᑦᑕᑦ	Tununiq	Tununiq
Uqqummiut	ᑕᑭᑦᑕᑦ	Uqqummiut	Uqqurmiut



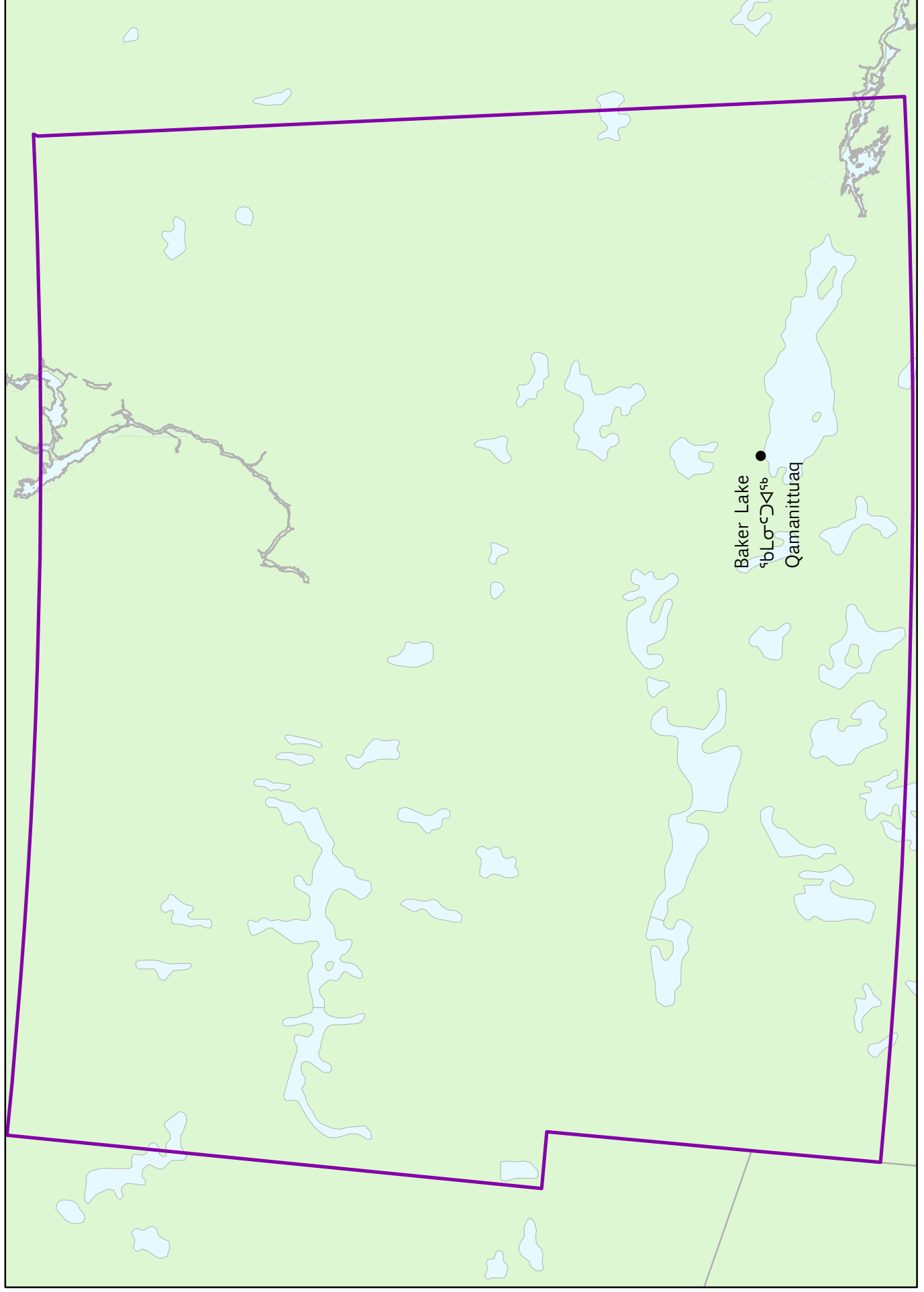
AMITTUQ - ᐱᐢᐸᐸᐸᐸᐸᐸ



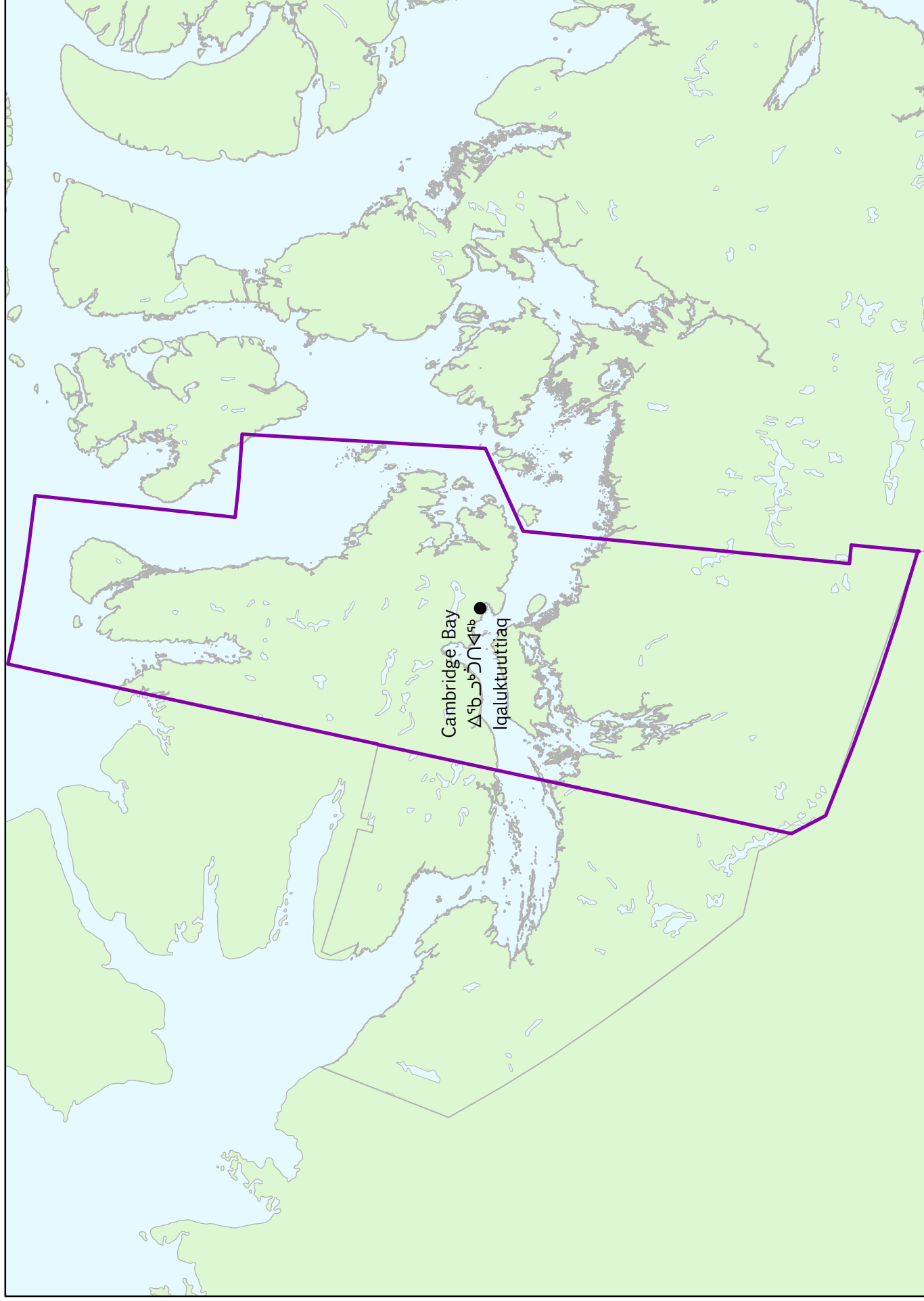
ARVIAT SOUTH - ᐱᕐᕐᕐᕐᕐᕐ ᕐᕐᕐᕐ - ARVIAT HIMURAA - ARVIAT SUD



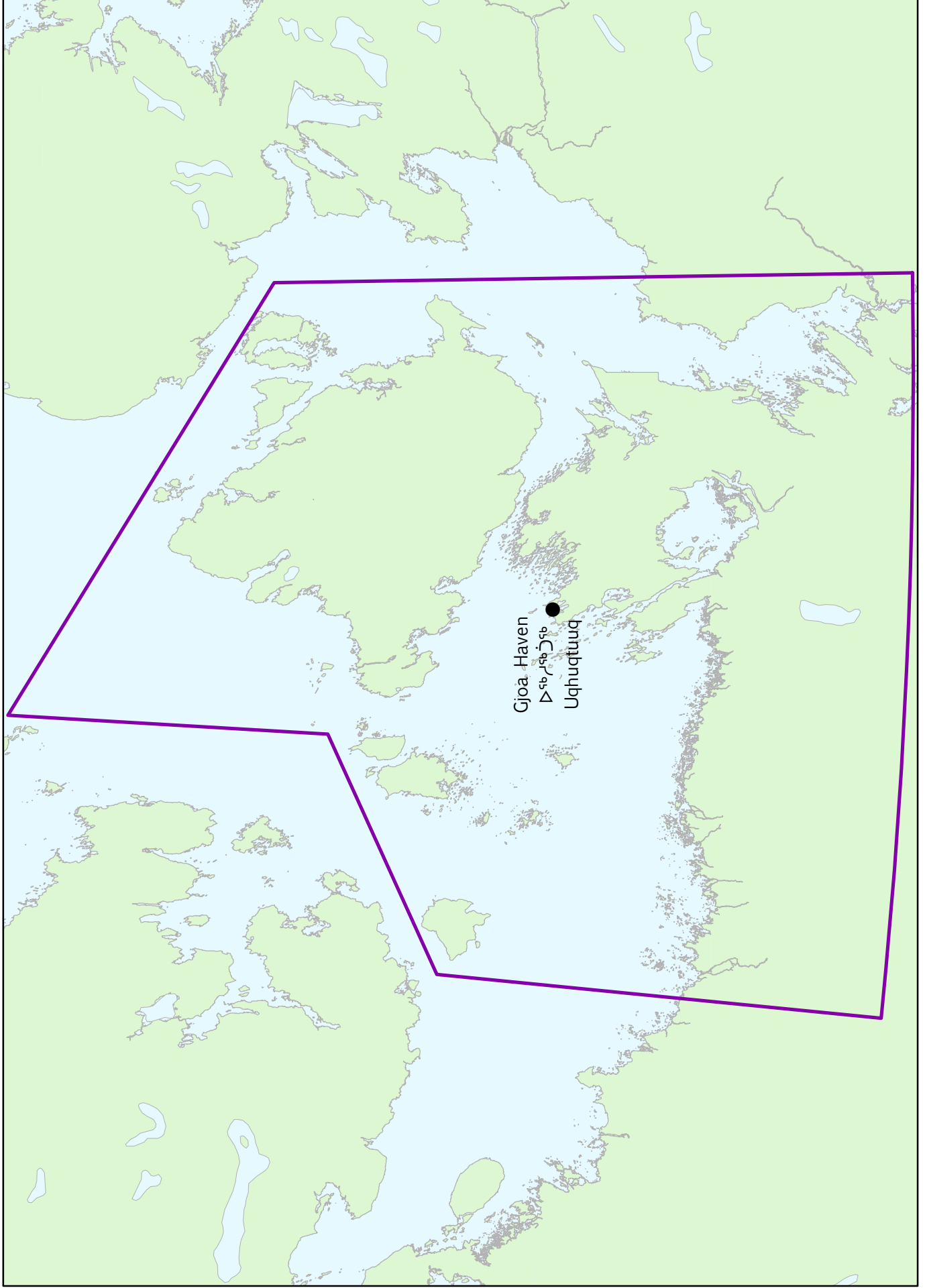
BAKER LAKE - ᐅᐅᐅᐅᐅᐅᐅᐅ - QAMANITTUAQ



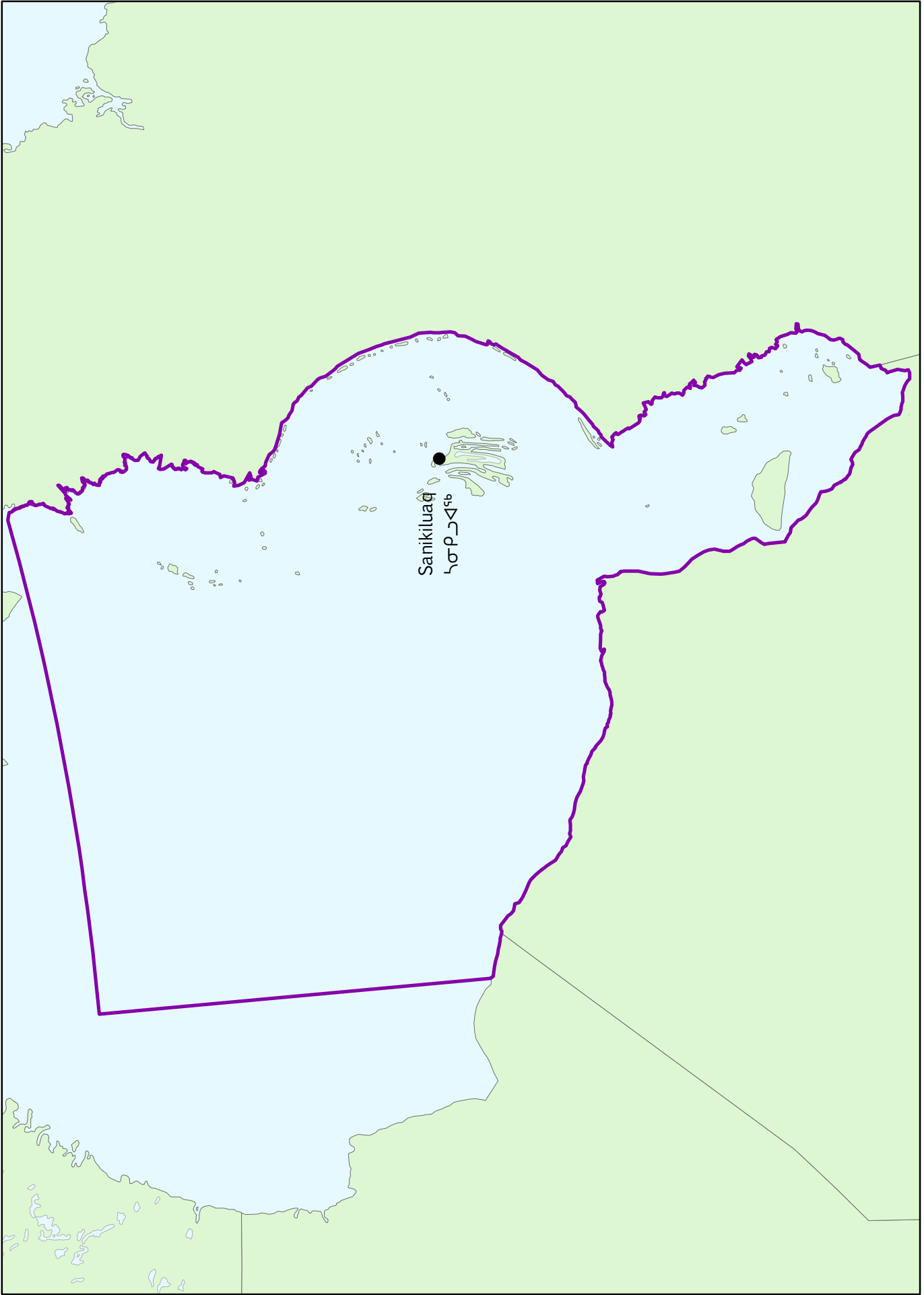
CAMBRIDGE BAY - ᐃᑦᑲᑦᑲᑦᑲᑦᑲᑦ - IQALUKTUUTTIAQ



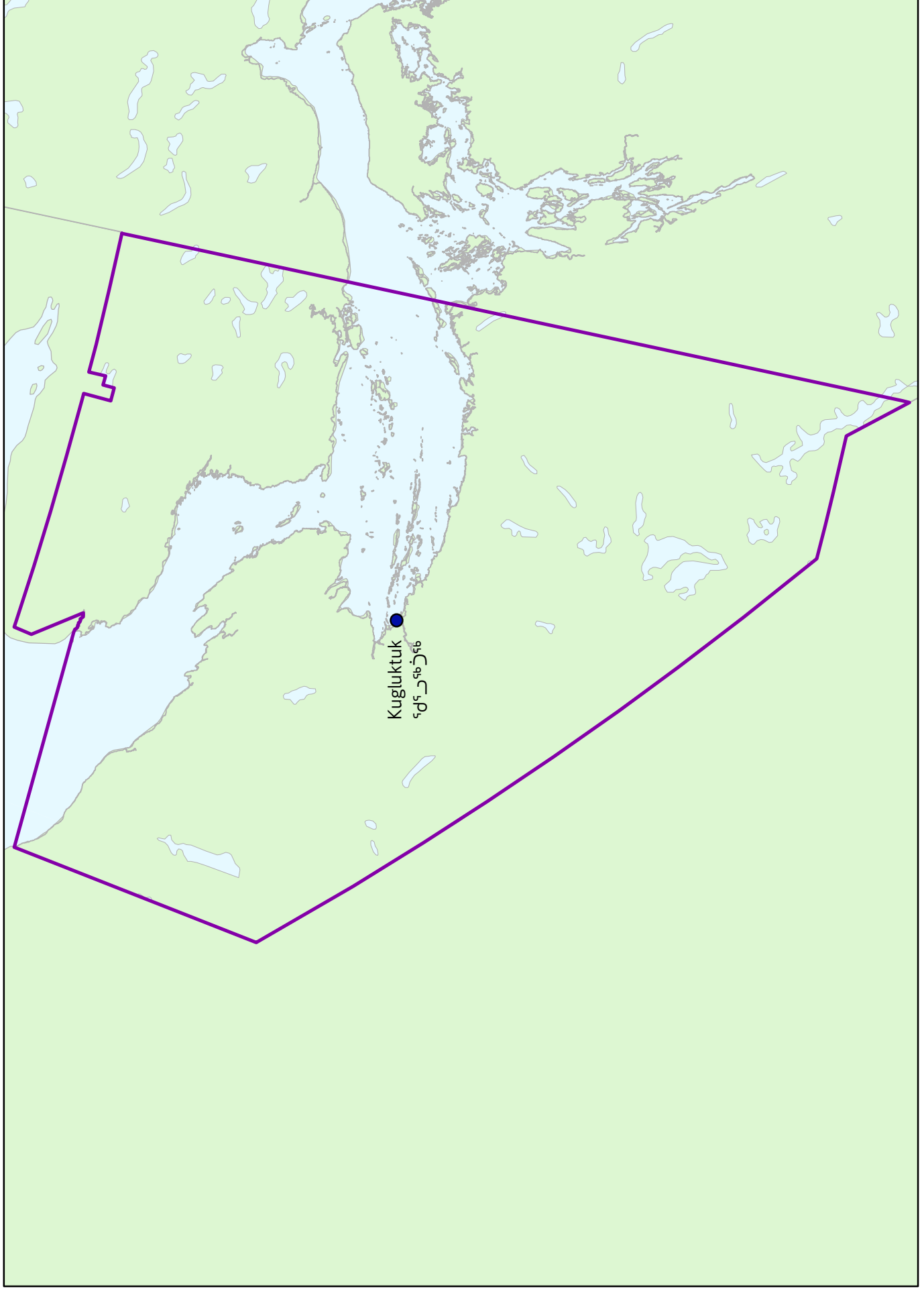
GJOA HAVEN - ᐅᓄᓄᓄᓄᓄᓄᓄᓄᓄᓄ - UQHUQTUUQ



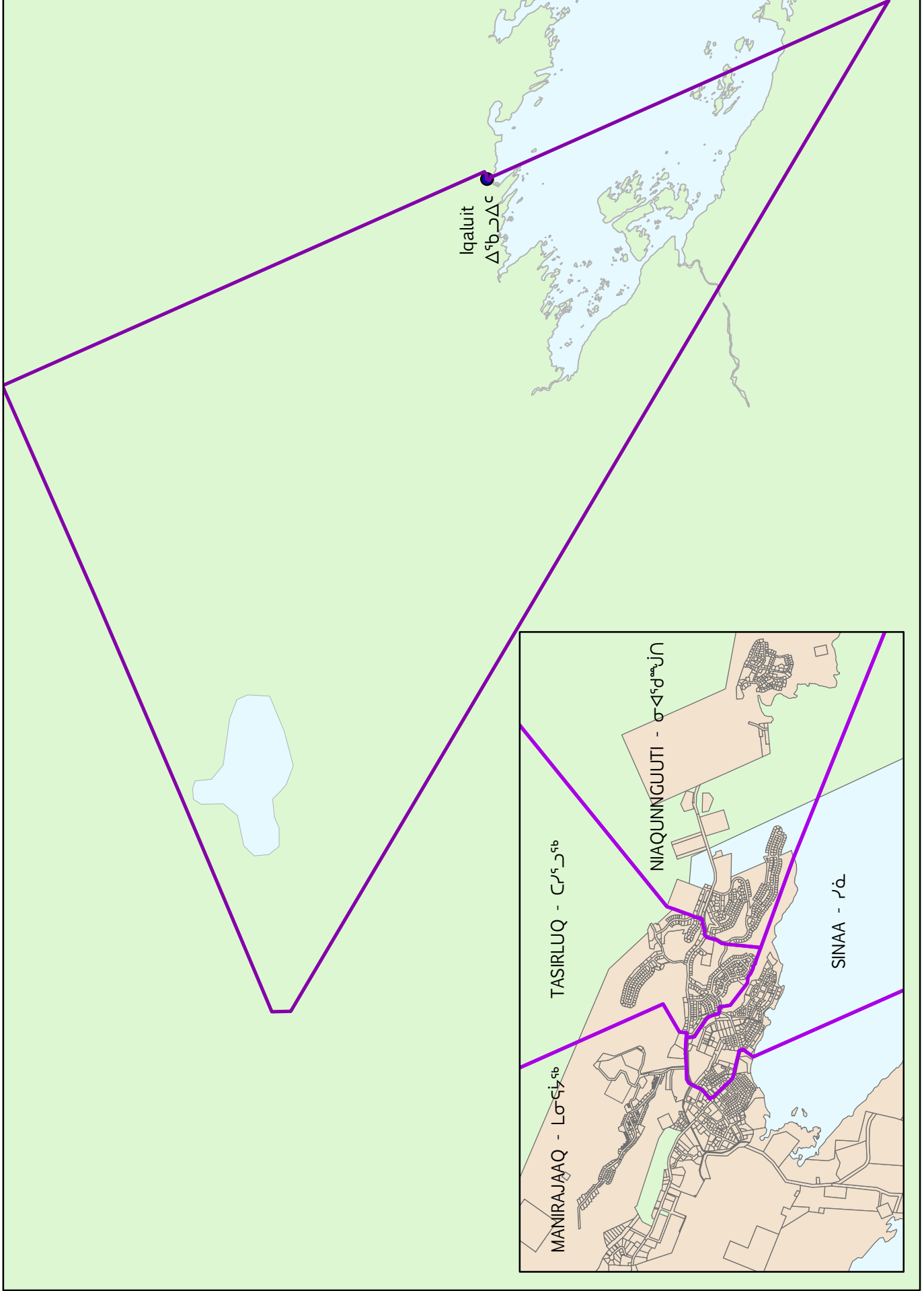
HUDSON BAY - ᑕᓯᓃᓯᓯᓄᓂᓂᓄᓂ - TAHIUYARYUAQ - BAIE d'HUDSON



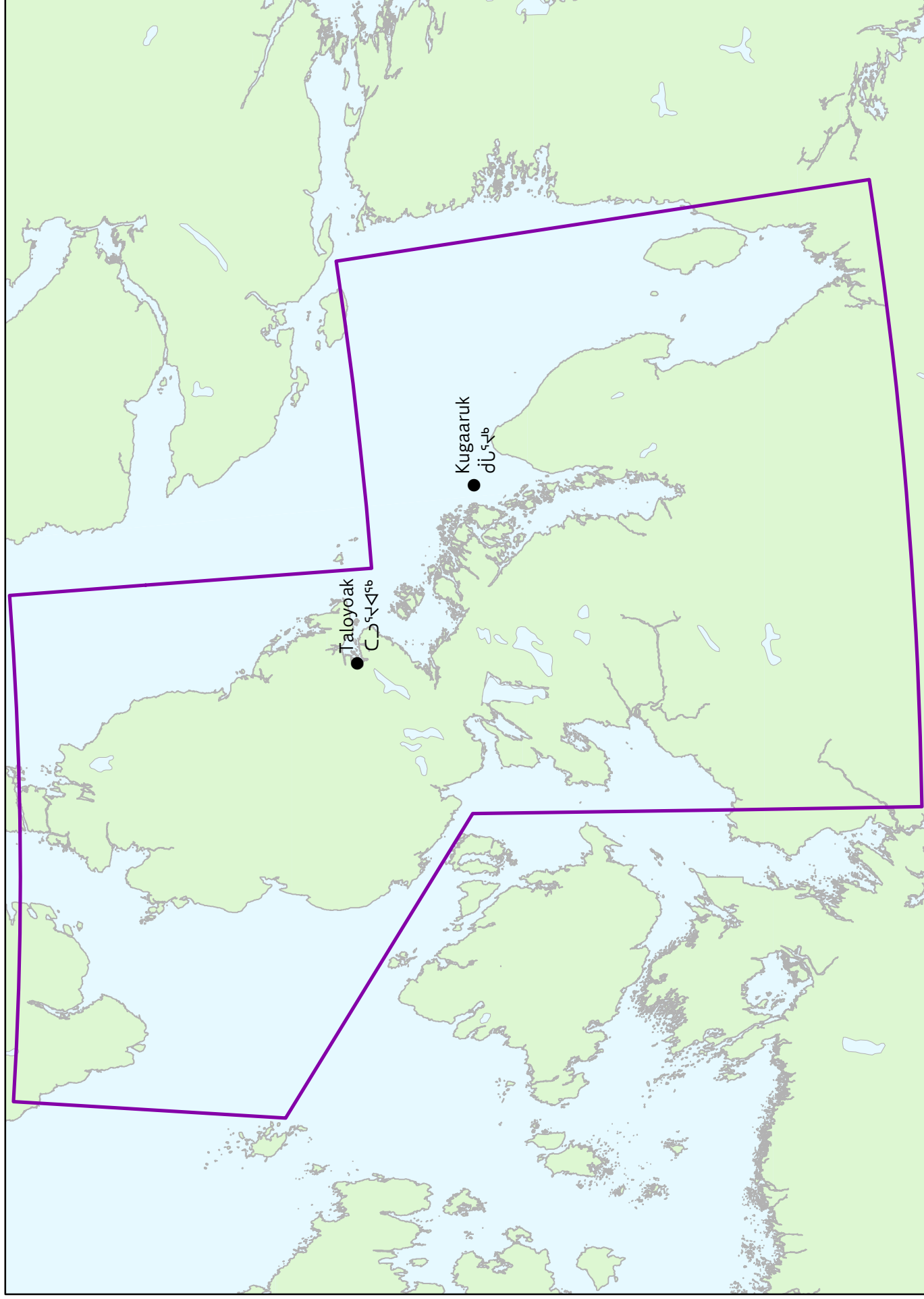
KUGLUKTUK - ᐃᑭᑭᑭᑭᑭᑭᑭᑭ



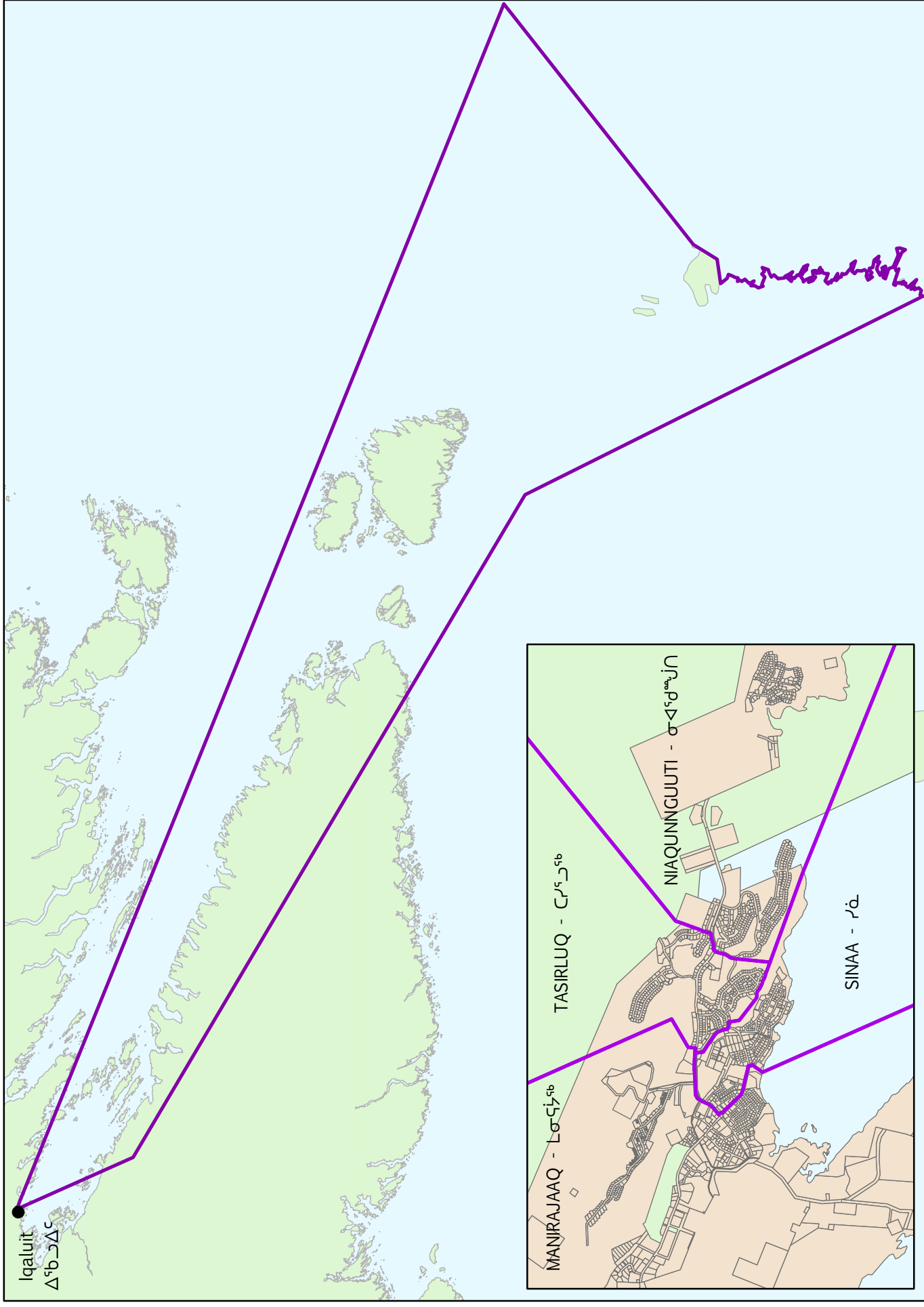
MANIRAJAAQ - ᐃᓄᓕᓴᓴᓐ



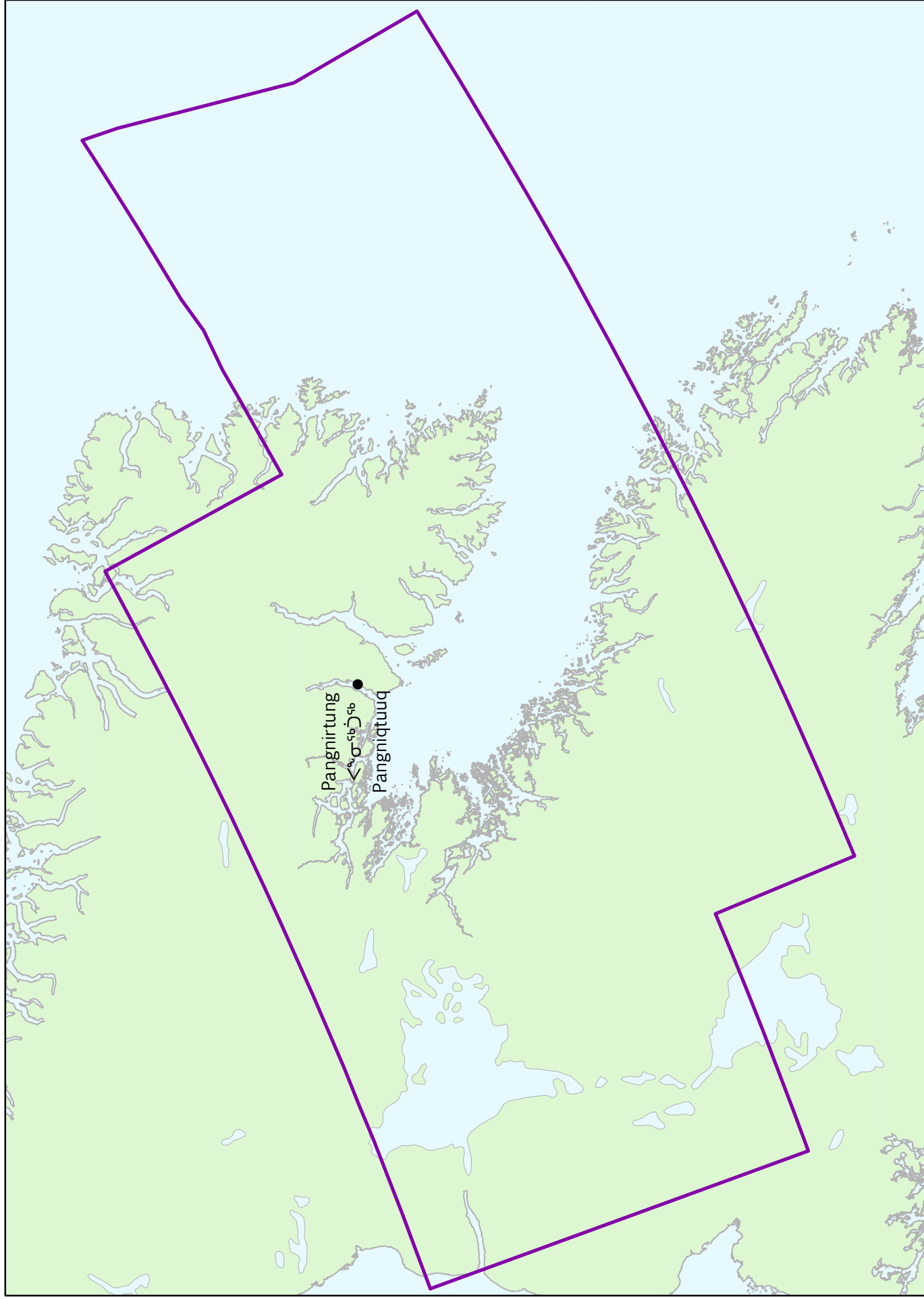
NETCHELIK - ᐱᑦᑕᐱᑦᑕᐱᑦ



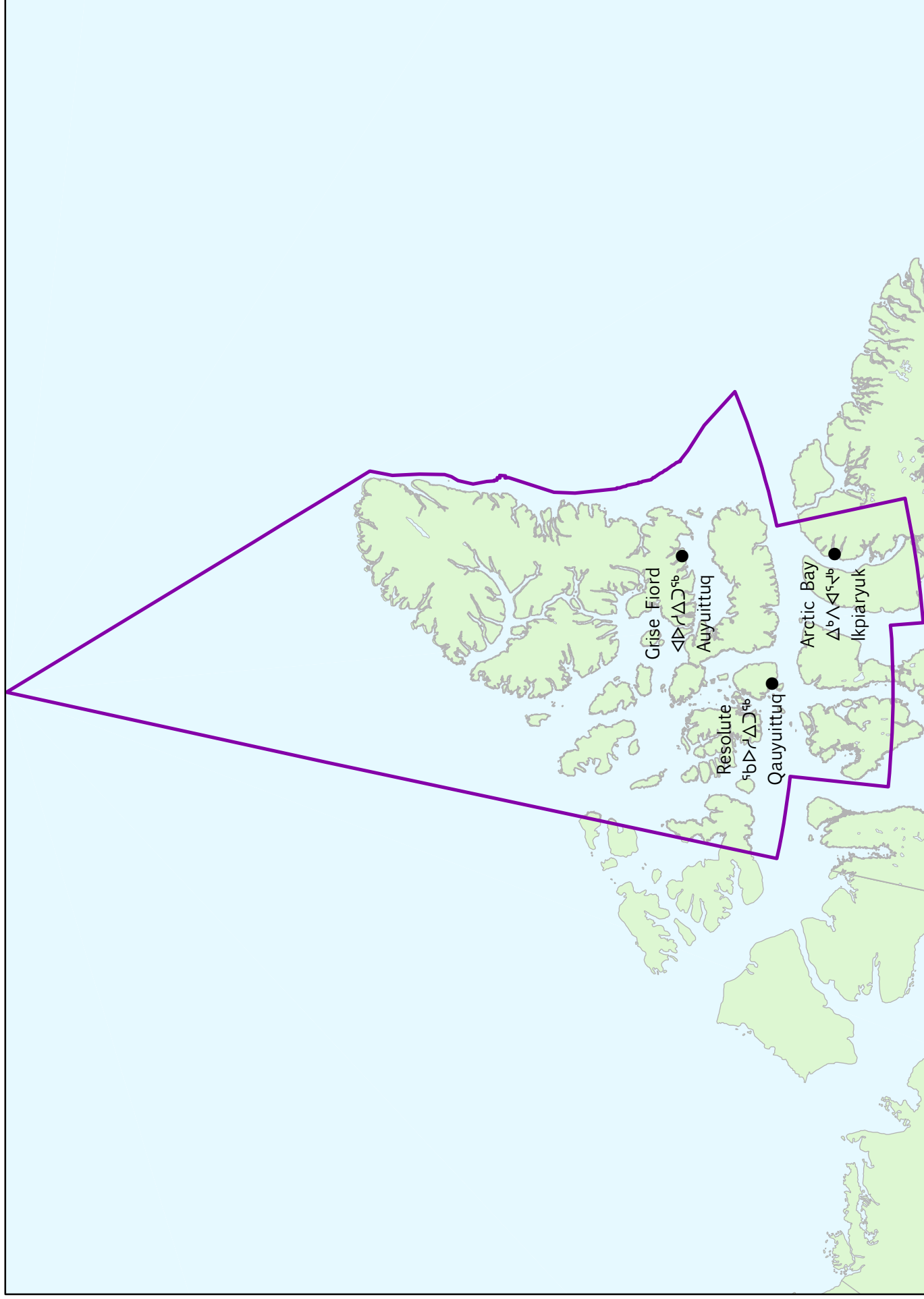
NIAQUNGUUTI - ᓄᓐᓐᓐᓐᓐᓐ



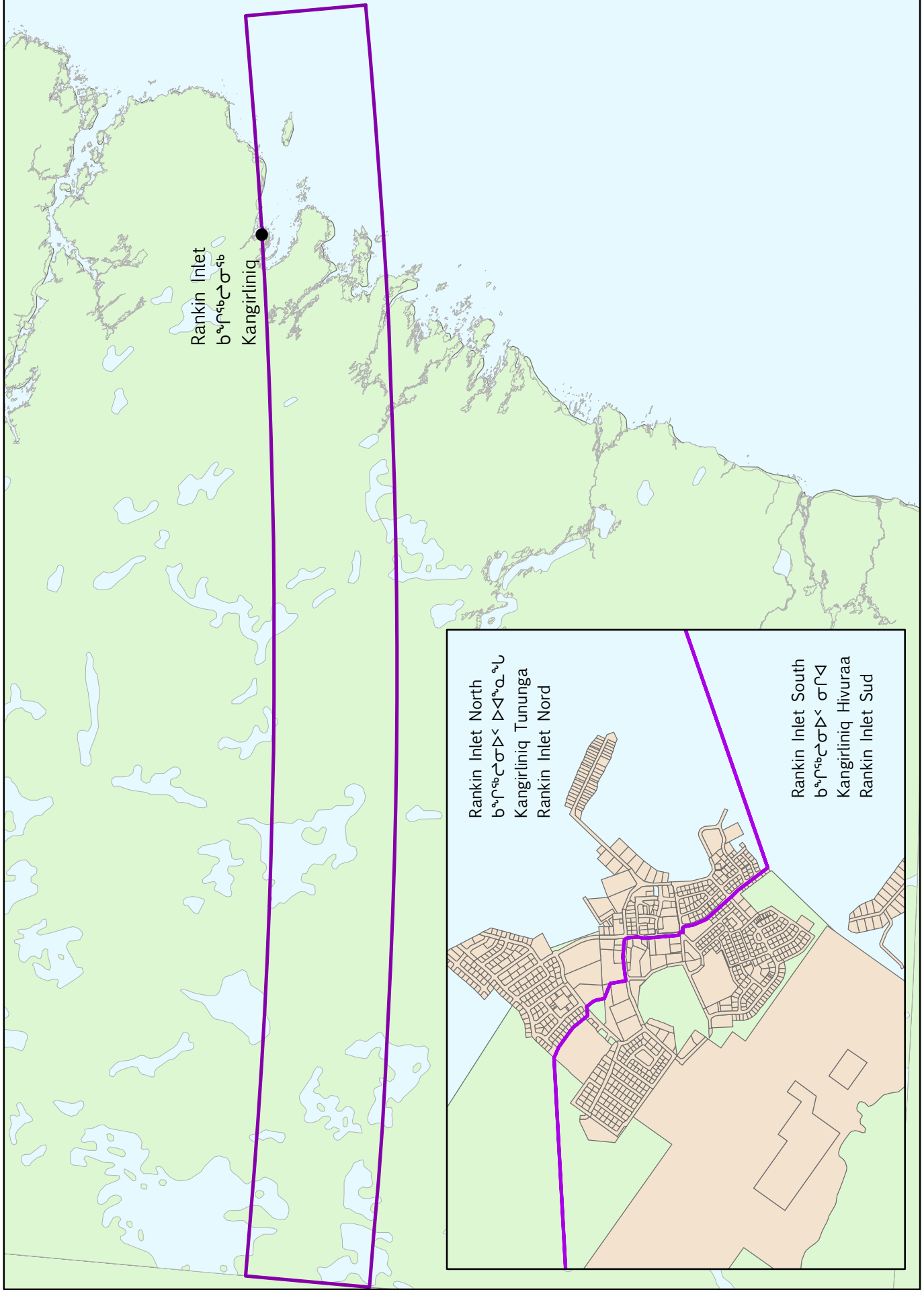
PANGNIRTUNG - ᐱᐅᐅᐅᐅᐅᐅᐅᐅ - PANGNIQTUUQ



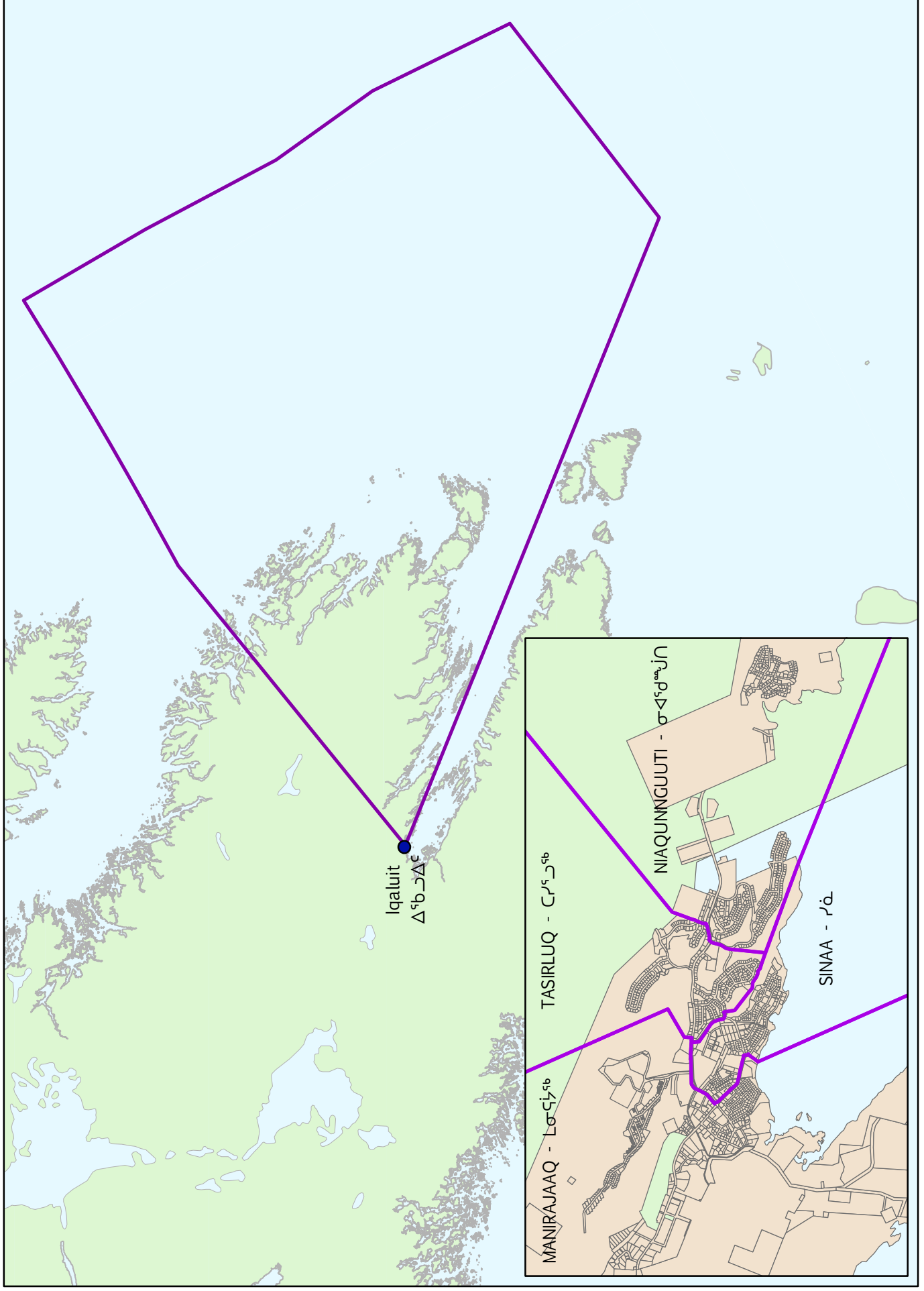
QUTTIKTUQ - ᖃᑦᑦᑎᑦᑕᑦᑕᑦ



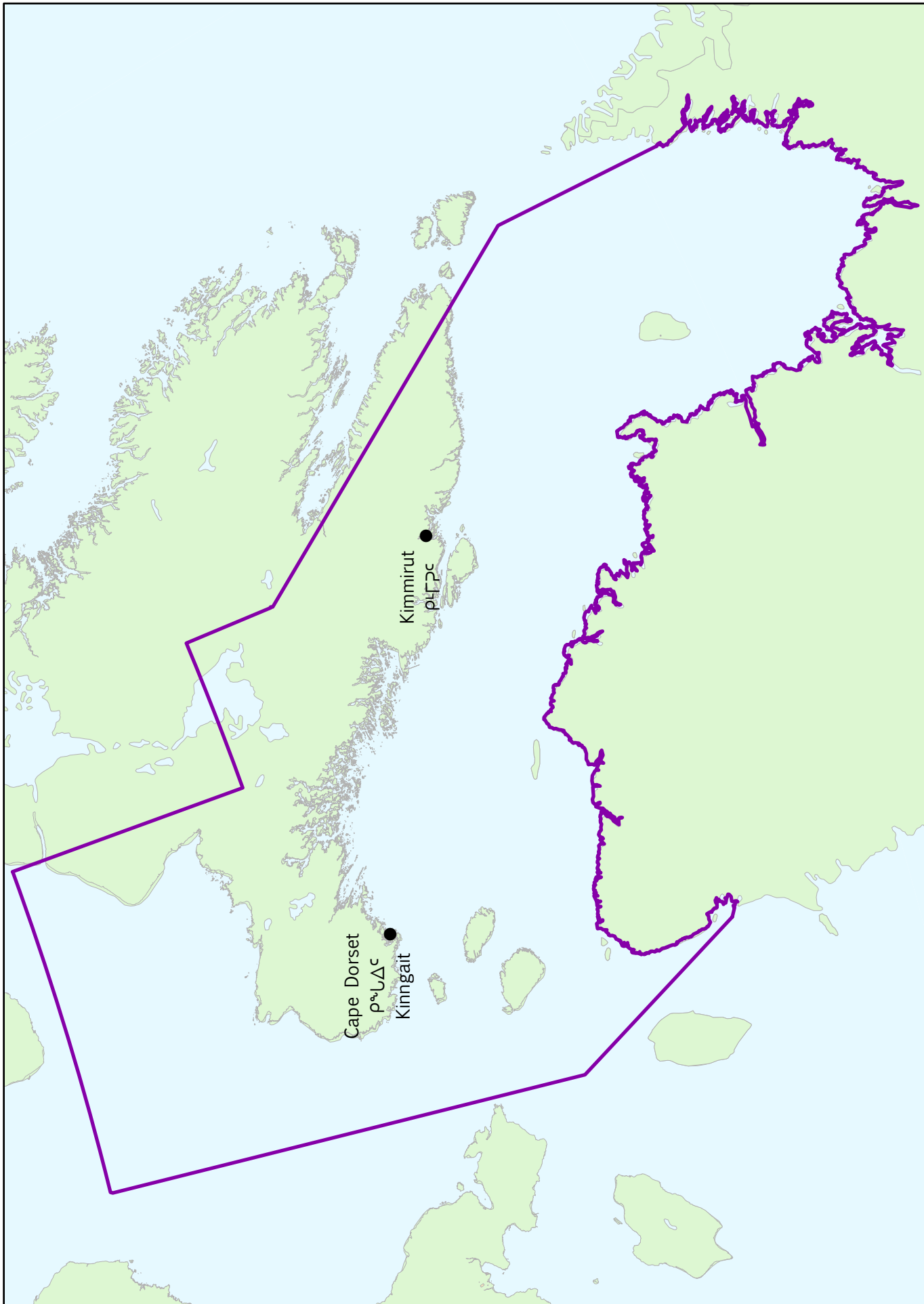
RANKIN INLET SOUTH - ᑲᓄᓯᑲᑦᑕᑦᑕᑦᑕᑦᑕᑦ ᑭᑦᑕᑦᑕᑦᑕᑦᑕᑦ - KANGIRLINIQ HIVURAA - RANKIN INLET SUD



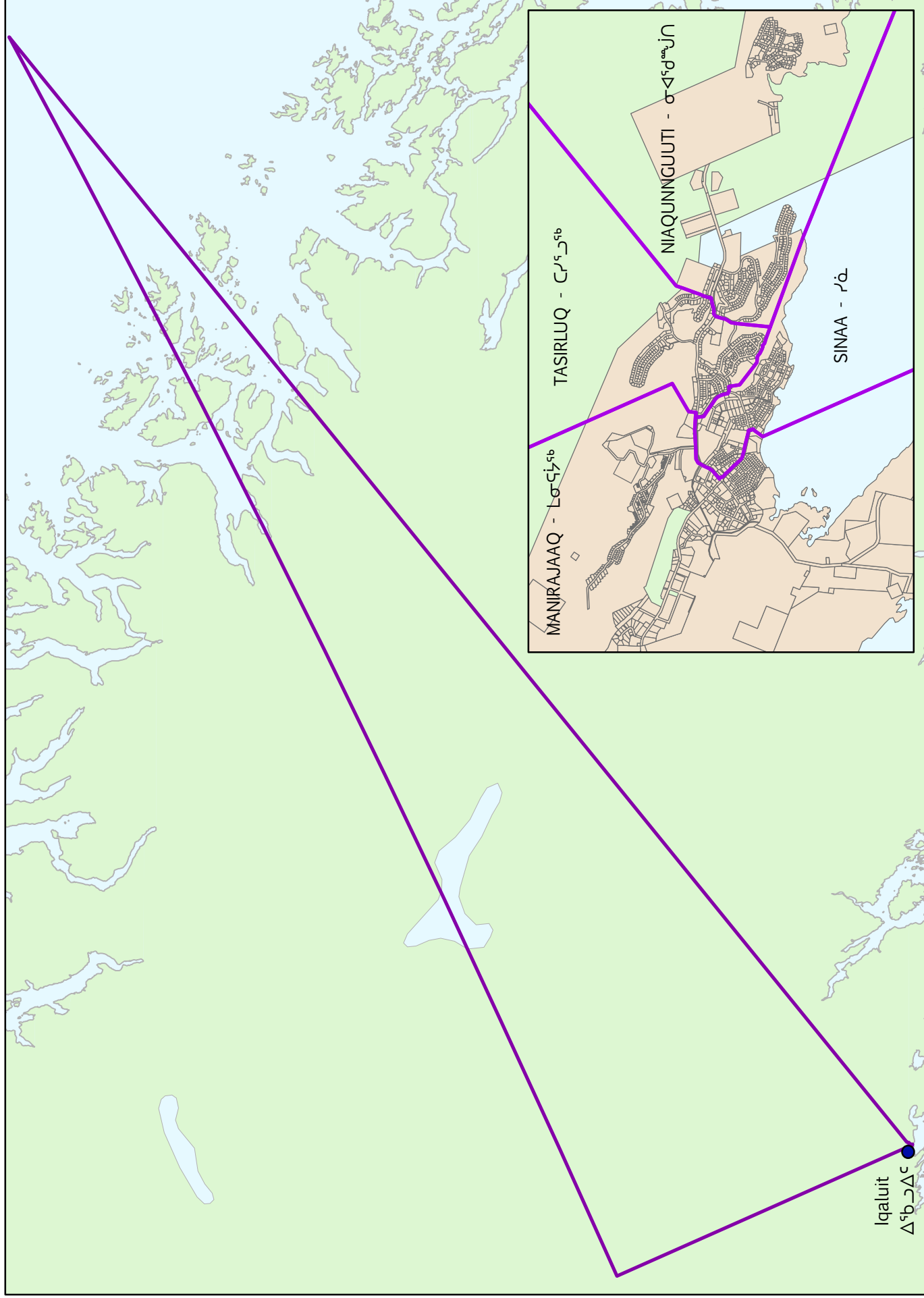
SINAA - ᐱᓐᓐ



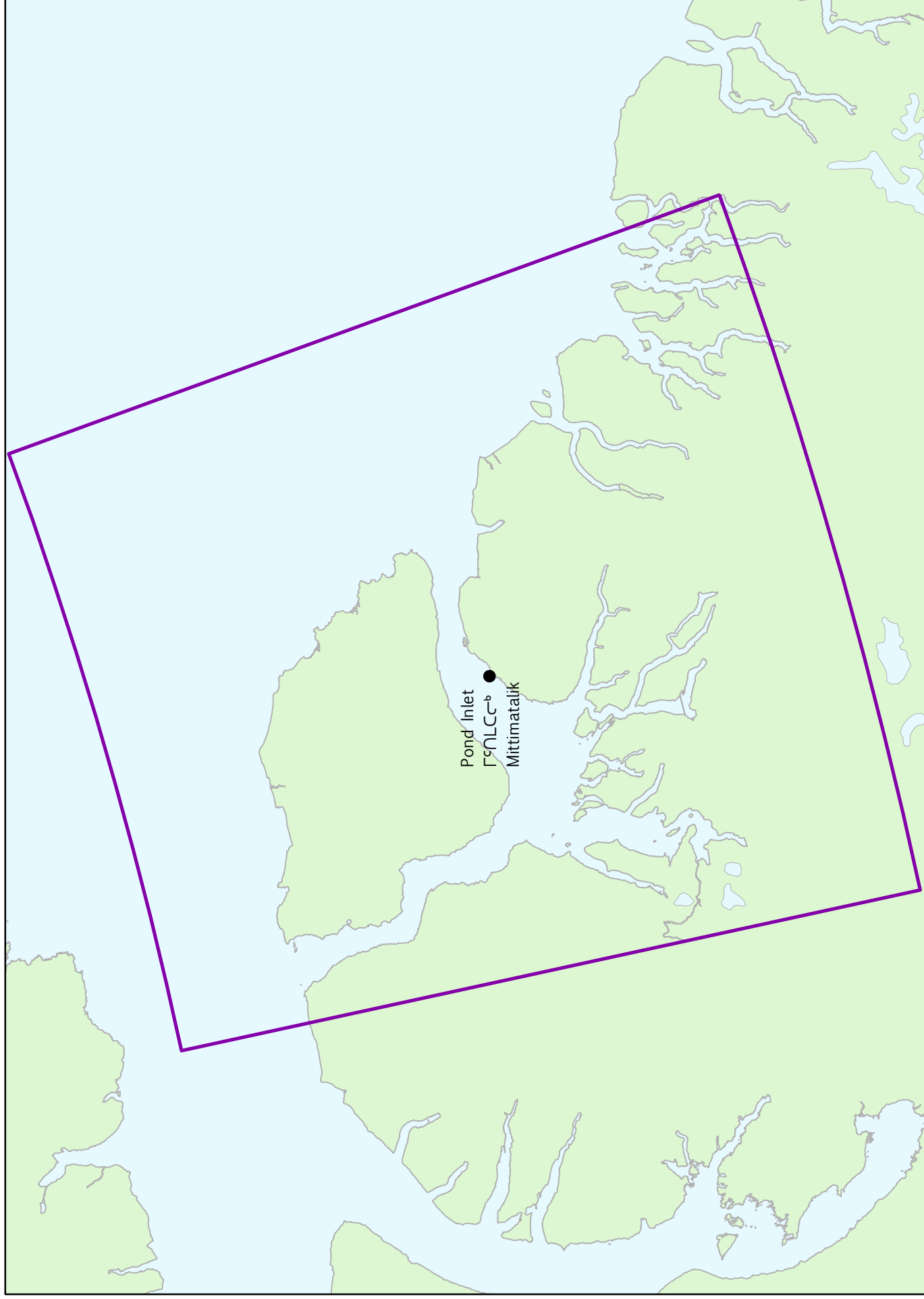
SOUTH BAFFIN - ᖃᕈᕐᖅᖃᕐᖅ - ᖃᕈᕐᖅᖃᕐᖅ - ᖃᕈᕐᖅᖃᕐᖅ - HIVERAA QIKIQTAALUK - BAFFIN SUD



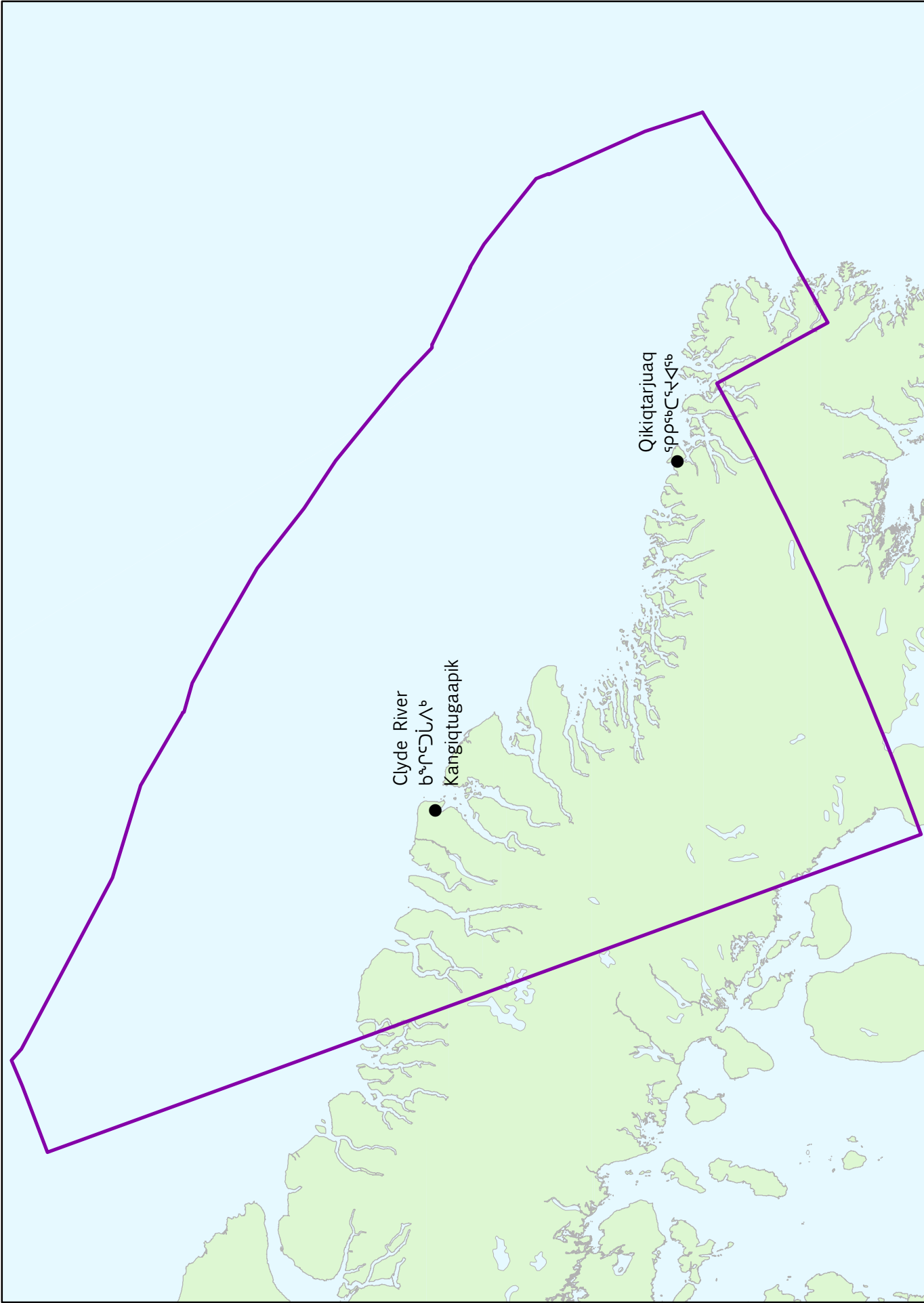
TASIRLUQ - ᑕᓯᓯᓃᓃᓃᓃᓃ



TUNUNIQ - ᐅᐅᐅᐅᐅ



UQQUMMIUT - ᐅᐅᐅᐅᐅᐅᐅᐅᐅᐅᐅᐅ - UQQURMIUT



**PRINTED BY
TERRITORIAL PRINTER FOR NUNAVUT
©2011**
